

# Old Lyme events

VOLUME 11 • QUARTER 3 • 2017



DELIVERING TOWN NEWS



TO EVERYONE IN TOWN

# THE SMARTER CHOICE FOR



## World-Class Cancer Care Is Coming to the Connecticut Shoreline

This fall, Middlesex Hospital is bringing the front line in the fight against cancer to the shoreline. Our new Shoreline Cancer Center will be home to our talented team of cancer specialists who can collaborate with the world's top cancer experts at Mayo Clinic. And it will bring with it all of the same advanced cancer treatments we offer at our existing Cancer Center in Middletown—all closer to home than you'd ever expect.

[middlesexhospital.org/cancercenter](http://middlesexhospital.org/cancercenter)

The Smarter Choice for Care  
 **MIDDLESEX HOSPITAL**





## First Selectwoman's Corner

The Summer of 2017 will be remembered by all of us in Old Lyme as the summer that we secured our future against a behemoth organization - the Federal Railroad Administration! The NEC Future Record of Decision (ROD) was published on July 12, 2017, and the bypass was taken off the map! While we were warned that this was a fight that could NOT be won, as once the FRA decided on a plan they would not be budged - YOU ALL RALLIED, sending in thousands of letters of protest, articulating the beauty and importance of our town and history - and it worked! Our strategy team developed an impressive 82-page document filled with data that was difficult to ignore, on the environmental importance, the historic value, the potential economic damages and the ecological balance that would be harmed if the FRA plan was to be implemented. It was an important, well-documented letter - but clearly without the groundswell of individuals who wrote in, it likely would not have had the influence needed to make the FRA change their plan. We should all pat each other on the back for a job well done, and then stay tuned for the future Service Implementation Plan which will determine the schedule for the planning of the connection between New Haven, CT and Providence, RI. It is not only possible, but also quite likely that this planning will occur when all of us are long gone, leaving the "vigilance" to our successors. Our current task is to assure our community that those successors will remain attentive to the NEC Future plan, taking part in any discussions in order to protect

our town and region. The strategy team has continued to research effective legislation that will assure communities of proper notification of any upcoming planning that would impact local communities. As leaders of our communities, we are charged with protecting our community today, and well into the future, which is a task that we embrace and continue to work towards. But for now, we celebrate the win that was hard fought by an entire community of advocates. A boatload of thanks is due to many people, including Senator Blumenthal, Senator Murphy, Congressman Courtney, Gov. Malloy, Commissioner Redeker of DOT, State Senator Formica, Rep. Carney, Greg Stroud of SECoast, Jennifer Hillhouse for the petition signing, the members of the town's Strategy Team, and most of all - each one of you who spoke out! Congratulations to you all for your hard work!



Bonnie A. Reemsnyder  
First Selectwoman

Adding to an exciting month, the annual Midsummer Festival took place on July 28th and 29th. The weather kept us guessing until the very last day, but the rain held off for both Friday night and all day Saturday. The cloud cover actually made for a comfortable day to walk around and visit all the craft tents, attractions, and numerous

**continued on page 3**

An advertisement for Saybrook Country Barn. The background is a photograph of a stone patio with a swimming pool and a lake in the background. In the foreground, there is a white plastic outdoor furniture set with blue cushions and a table. The text "Outdoor Furniture Built To Last" is overlaid on the top right. The Saybrook Country Barn logo is in the bottom right, and contact information is in the bottom left. A slogan is at the bottom center.

Outdoor Furniture Built To Last

**Saybrook  
Country Barn**  
2 Main Street - Old Saybrook CT

860-388-0891  
saybrookcountrybarn.com

| Home is better when you love where you live.

# events

**TM Ventures, LLC**  
**dba Essex Printing & Events Magazines**

18 Industrial Park Road, P.O.Box 205  
Centerbrook, CT 06409

860-767-9087 Fax 860-767-0259  
email: [print@essexprinting.com](mailto:print@essexprinting.com)  
[www.essexprinting.com](http://www.essexprinting.com)

**PUBLISHER**

William E. McMinn

**ART DIRECTOR**

Kathy Alsop 860-391-4372  
[kathy@eventsmagazines.com](mailto:kathy@eventsmagazines.com)

**COVER EDITOR**

AC Proctor 860-767-9087

**LAYOUT & AD DESIGN**

Lynne Hardt

**SALES REPRESENTATIVES**

**VERNON • TOLLAND**

**ELLINGTON • WILLINGTON**  
Tom Fortin 860-299-4568  
[tom@eventsmagazines.com](mailto:tom@eventsmagazines.com)

**ESSEX • WESTBROOK**

**CLINTON • MADISON**  
Ward Feirer 914-806-5500  
[wfeirer@gmail.com](mailto:wfeirer@gmail.com)

**OLD SAYBROOK • OLD LYME • EAST LYME**

Betty Martelle 860-333-7117  
[betty@eventsmagazines.com](mailto:betty@eventsmagazines.com)

**CHESTER • EAST HADDAM**

**EAST HAMPTON • HADDAM**  
Sue Smith 860-885-9670  
[sue@eventsmagazines.com](mailto:sue@eventsmagazines.com)

**GUILFORD • STONINGTON**

Essex Printing 860-767-9087  
[print@essexprinting.com](mailto:print@essexprinting.com)

**Cover Photo**

AC Proctor

[www.eventsmagazines.com](http://www.eventsmagazines.com)

**OVER 1,000,000 READERS**  
**17 TOWNS EVERY QUARTER**

Copyright© 2017 Events Magazines. All rights reserved. No part of this publication may be reproduced or transmitted in any form or by any means, electronic or mechanical, including photocopy, recording, or any information storage and retrieval system without written permission. Not responsible for omissions or typographical errors. All advertising material created by Essex Printing and Events Magazines is to be considered proprietary. Essex Printing and Events Magazines reserves the rights and license to all ad designs and photographic images produced by Essex Printing and Events Magazines. Reproduction rights for individual use in other publications is offered and available by purchase directly through Essex Printing and Events Magazines. Editorial appearing in this magazine is submitted by municipal agencies and other approved sources.

## CONTENTS

First Selectwoman's Corner.....	1
Assessor's Office.....	8
Town Hours & Holiday Schedule.....	9
Town Clerk's Office.....	10
Lyme-Old Lyme Chamber of Commerce .....	12
Lyme-Old Lyme Chamber of Commerce Announces	
Scholarship Winners & Present Special Awards.....	14
Registrars of Voters .....	17
Municipal Election .....	18
Trash and Recycling.....	19
Transfer Station Information .....	20
A Guide to Recycling.....	21
Lyme-Old Lyme Schools .....	22
Lyme-Old Lyme Education Foundation .....	23
Rogers Lake Authority News .....	24
Old Lyme Phoebe Griffin Noyes Library .....	25
Lymes' Youth Service Bureau.....	28
Town of Old Lyme Social Services .....	30
Ledge Light Health District.....	31
Estuary Council Regional Senior Center .....	32
The Old Lyme Visiting Nurse Association, Inc. ....	32
The Woman's Exchange.....	32
Do You Have a Family Emergency Plan? .....	33
Advice for Executors.....	34
Time to Rebalance?.....	34
Old Lyme Conservation Commission.....	35
The Misunderstood Red Wine "Merlot".....	36
Middlesex Hospital to Expand Cancer Services .....	36
Faerieville USA.....	38
Chrysoulakis Family of Old Lyme Recognized as the	
Fund A Cure Family at 2017 JDRF Promise Ball.....	39
Child & Family Agency Welcomes New Members .....	40
Old Lyme Circa 1952.....	41
Family Friendly Enjoyment at Harvest Fun Day.....	42
LAA Lyme Art Association .....	44
Florence Griswold Museum Receives Landscaping Grant.....	46
Old Lyme Town Band .....	48



## First Selectwoman's Corner... continued from page 1

food vendors all down Lyme Street. This year even featured the Antique Car Show, which was postponed from the Memorial Day Parade, and was a big hit at the Bee & Thistle Inn. With the sun clearing things for the late afternoon, it was a perfect night for the Old Lyme Town Band to be the opening act, followed by an excellent fireworks display at dark. The attendance was excellent at all of the events. Special thanks to all of the people who plan for this event throughout the year, making it a big success year after year.

The main projects that we have been focusing on for several years have made some great progress. As reported in the spring, the Boathouse has been completed, and with the warm weather, grass is finally growing and the Fred Emerson Boathouse has been in constant use all summer long. Plans for renovations to the bathroom building have continued and we anticipate completion before next spring. Hopefully, with the fundraising that has been ongoing, we will also be able to add a Pavilion for the enjoyment of all visitors to Hains Park, as well as ADA accessible walkways to the bathrooms and pavilion. And speaking of Hains Park/Rogers Lake, this is the second year that we have completed our weed eradication project with the use of Flumioxazine. The treatment was completed in early June, and it appears that it was effective. Our permit is for three years, so the plan is to treat once again in June of 2018, and then evaluate the effectiveness over three years. As a side note, there have been two wells that have been tested to assure no

well contamination by the herbicide, and all tests (both before and after treatment) have come back negative on the presence of the herbicide, which is comforting news.

As many of you know, the project on Hartford Avenue in Sound View was substantially completed in the spring, and we have delayed any additional completion work in the area for the summer. Because the work was completed well under budget, we were able to pave Hartford Avenue from Bocce Lane to Pond Road, which was not originally planned. We will still be under the budget allotted for the project. As the new paving did not meet the quality requirements of our Public Works Superintendent, as well as the DOT, the contractor has agreed to re-mill areas, and re-pave Hartford Avenue after the Labor Day weekend. There are a few other items on the punch list for completion, but by late September, the project should be fully completed. It has been a long time in coming, but it is great to see how nice Hartford Avenue looks with the upgrades. We will continue to look for opportunities to improve the town parking lot, as well as to connect lower Hartford Ave. with Rte. 156 with sidewalks.

In addition, the WPCA has been working diligently on the Coastal Wastewater Management Plan, which includes a plan for sewers in the Sound View area, and further testing in the Hawks Nest  
**continued on page 4**

# SeaSide Wine & Spirits

## Wine & Spirits Merchants

118 MAIN STREET • OLD SAYBROOK, CT 06475

SEASIDEWINE@YAHOO.COM

860-388-3015

Be sure to visit our Flagship Store:

## Spirits of Madison

Next to Stop & Shop

Madison, Ct 06443

203-245-9695 • spiritsofmadison@sbcglobal.net





# \$325,867.48

**( Rushing back with breakfast for  
your family and you're broadsided  
by an uninsured driver )**

Having insurance coverage is one thing.  
Having the right coverage is what *really*  
matters. Will your current plan protect you  
from drivers with insufficient coverage,  
as well as your ability to earn a living?

Are you sure? Visit [BeSure123.com](http://BeSure123.com)

## SmithBrothers.

Be sure.

**Auto | Home | Wealth Management**

Glastonbury CT Chester CT Niantic CT  
Somers CT Windsor Locks CT Easthampton MA

Representing top insurance  
carriers such as:

**The Hanover**  
Insurance Group®

**(800) 380-7762**

Smith Brothers Insurance, LLC

## Selectwoman's Corner... continued from page 3

Beach Association. A presentation was scheduled for August at the Shoreline Community Center, which was attended by over 100 local residents. The Chairman of the WPCA, Rich Prendergast, gave an excellent Power Point Presentation and answered many questions posed by residents about the plan. The Power Point Presentation is posted on the website, and more presentations are planned for the future. Included in the plan is the possibility of a shared pump station for all the beach areas in the town parking lot area. The Town of Old Lyme and private beach associations are currently in negotiations for this plan, which will benefit all residents served by sewers. Special thanks to the WPCA members for their thoughtful presentation and sticking with the task at hand.

Another project that has been lingering for decades is finally completed - the Academy Lane Fire Dock. For years, the Fire Department has considered the renovation of this dock as a priority for fire protection within the village area. The permitting process has held this project up beyond any reasonable expectation, and despite that, we kept forging on - with great final results. In late July, the Fire Department conducted tests to determine if the dock met their needs for ability to draw water - both at high tide and mean low tide. The Fire Chief, Tom Risom, reported that the results exceeded their expectations and they are gratified to report that the village areas that include Academy Lane, Beckwith Lane, Ferry Road and Lyme Street are now better protected because of the construction of this fire dock. Thank you to all who worked so hard to make this happen!

The stage is now set for the conversion of all of our street lights to LED street lights throughout town. The project will be ongoing through the fall of 2017, and you should begin to notice the new lights with the earlier sunsets of fall. As you may have noticed throughout the summer, street lights that needed replacing were not replaced in anticipation of the new LED style lights, so we thank you for your patience.

All of the cities and towns in CT are holding their breath as the State Legislature and the Governor continue to work without a budget. There is no getting around the fact that the state is facing some major financial issues, and that impacts our towns dramatically. For the Town of Old Lyme, we have never had a great deal of state aid, but what we have received in the past has already been drastically reduced, and the remainder is in jeopardy. It is incumbent upon all of us to be diligent about our spending and look for ways to work together within our regions. The Town of East Lyme recently changed from a Resident Trooper program to an independent Police Department, hiring Michael Finkelstein as their Chief of Police. In an effort to gain cost savings and improved service, the Town of Old Lyme has begun discussions with our neighbor about creating one larger Police Department that serves the needs of both East Lyme and Old Lyme. The initial discussions have been positive and there is

**continued on page 6**



# Best Sheds Best Price!

All Buildings On Sale PLUS Free Delivery in CT, MA, RI\* and 0% Financing!

Great  
time to  
Buy!

BONUS!  
2 Free  
Transom  
Windows



## T-1-11 NEW ENGLAND COLONIAL with mini shed dormer

8x12 Sale \$3995 Reg. \$4860  
10x14 Sale \$4195 Reg. \$5145  
10x16 Sale \$4395 Reg. \$5425  
12x16 Sale \$4995 Reg. \$6270

## SIGNATURE VINYL CAPE

8x12 Sale \$2695 Reg. \$3215  
10x12 Sale \$3195 Reg. \$3955  
10x16 Sale \$3695 Reg. \$4500  
12x16 Sale \$4295 Reg. \$5285



## VINYL SIG. CAPE GARAGE

12x20  
Reg. \$7335  
Sale \$5995  
12x24  
Reg. \$8245  
Sale \$6695



## T-1-11 GARDEN SPECIAL CAPE GARAGE

12x20 Reg. \$8095  
Sale \$6695  
12x24 Reg. \$9045  
Sale \$7595



## Top 3 Reasons to Choose Kloter Farms:

1. Our Products We demand quality workmanship on everything.
2. Our Prices We will not be undersold.
3. Our Service We continue to pledge our total commitment to our customers.

All Elite Buildings 20% off  
Including Upgrades



## VINYL ELITE CAPE

16x24 Sale \$34,772 Reg. \$43,465  
Priced as shown with Lean-To



## SIGNATURE VINYL GARAGE

20x20 Sale \$15,304 Reg. \$19,130  
24x24 Sale \$18,616 Reg. \$23,270



## SIGNATURE T-1-11 COTTAGE

8x12 Sale \$2295 10x16 Sale \$2995  
10x12 Sale \$2645 12x16 Sale \$3595



Base Price

## VINYL CONCORD GARAGE

24x24 Sale \$29,995 Reg. \$38,165



Fully Loaded

## T-1-11 CONCORD GARAGE

24x24 Sale \$32,104 Reg. \$40,130 (as shown)

Family fun this Saturday! Learn more at [KloterFarms.com](http://KloterFarms.com)

Sale ends 9/30/17

# KLOTER FARMS

KloterFarms.com | 860-871-1048 | 216 West Rd, Ellington, CT | \*FREE DELIVERY in CT, MA, RI \$1500 min, Extra charge for Cape Cod.

## Selectwoman's Corner... continued from page 4

a general feeling that this idea is worth the study. A committee will be formed to continue these discussions to determine if this will be a good fit for the future of our community.

The Board of Selectmen has been busy reviewing a draft Blight Ordinance that we developed by our Land Use officials, including our Building, Zoning, Health and Fire Marshal. The ordinance has been a long time in coming, but must be developed to address the unique needs of our community, which include both residential and commercial blighted properties. In July, the Board approved a draft that is ready to be reviewed by the Town Attorney. Any ordinance that is approved by the Board of Selectmen must go to a town meeting for a final vote. We will continue to work on this and bring it to a Town Meeting in the near future.

As we approach the fall of 2017, please remember to be vigilant in your preparedness - it is hurricane season, and while we haven't had one in several years, we should always remember to be prepared to be on our own for at least three days without electricity or the ability to get out of the house. That means stocking up on non-perishable foods, water, batteries, and a plan for notifying loved ones of your whereabouts. The Town of Old Lyme continues to hold preparedness drills to make sure we are ready, and we ask you to do the same - for any type of emergency! Remember to sign up

for Old Lyme Alerts on our website, and reach out and let us know if you, or anyone in your household, has special needs. We continue to look for ways to assure your safety during all emergencies, so help us by signing up!

Good luck to all the new students in Lyme Old Lyme School System - we hope you have a wonderful, productive year, and are always proud of your accomplishments. Please share them with us in town hall.

And remember - Election Day is November 7, 2017 - if you are not yet registered to vote, please stop in at Town Hall to register. This year, we will be saying goodbye to a veteran Selectman - Skip Sibley, who has served this town as Selectman for 16 years. Skip has always been an advocate for the people of Old Lyme, regularly reporting to the Board of Selectmen on requests that people have made to him. We all owe him a debt of gratitude for his countless hours spent on community efforts - he will be greatly missed on the Board. Congratulations on your 'retirement' Skip, and thank you for all your hard work and advocacy! On behalf of the entire Board of Selectmen, have a safe and healthy fall season.

Bonnie Reemsnyder,  
First Selectwoman



**TICKETS ON SALE NOW!**

 <p><b>WEST SIDE STORY</b> Book by Arthur Laurents Music by Leonard Bernstein Lyrics by Stephen Sondheim Based on a Conception by Jerome Robbins <b>JULY 5TH – JULY 30TH</b></p>	 <p><b>SATURDAY NIGHT FEVER: THE MUSICAL</b> Based on the Paramount/RSO Film and Story by Nik Cohn Adapted for the stage by Robert Stigwood in collaboration with Bill Oakes <b>AUGUST 9TH – SEPTEMBER 3RD</b></p>	 <p><b>I HATE MUSICALS: THE MUSICAL</b> World Premiere by Mike Reiss <b>SEPTEMBER 27TH – OCTOBER 15TH</b></p>
---	---	--

103 MAIN STREET | IVORYTON, CT 06442 | 860.767.7318 | [IVORYTONPLAYHOUSE.ORG](http://IVORYTONPLAYHOUSE.ORG)





# LOCATION LOCATION LOCATION

The Sotheby's International Realty network features 880+ offices in 70 Countries and territories worldwide. United under a single powerful brand name with more recognition and respect globally than any other real estate company or network, we are in a better position than anyone to connect buyers and sellers of fine property everywhere in the world. Call us to see how the power of the Sotheby's International Realty network can work for you.



**OLD LYME BROKERAGE  
103 HALLS ROAD  
860.434.2400**

[williampitt.com](http://williampitt.com)

Each Office is Independently Owned and Operated. Equal Housing Opportunity

**SHORELINE**  
 PERIODONTICS & DENTAL IMPLANTS  
 Gregory A. Toback DMD MS  
 Marianne M. Urbanski DMD MScD



"Our practice is committed to providing patients with state-of-the-art treatment for dental implants and all forms of periodontal disease in a comfortable and caring environment."

**Free Implant Consultations**  
 Dental Implants Teeth-In-A-Day  
 Laser Gum Surgery Esthetic Gum Surgery

[www.shorelineperio.com](http://www.shorelineperio.com)

190 Hempstead Street, New London, CT 06320 860.443.2428  
 62 Wells Street, Westerly, RI 02891 401.596.0000

## Assessor's Office

### ASSESSOR DEADLINES 2017

Did you know Real Estate and Property Assessment information is available through our GIS? Check out our GIS mapping link on the Town website at: [oldlyme-ct.gov](http://oldlyme-ct.gov).

### THE ASSESSOR'S OFFICE WOULD LIKE TO INFORM RESIDENTS OF THE FOLLOWING DEADLINES.

All forms and proofs unless noted must be filed by October 1st 2017 in the Assessor's office located at 52 Lyme St, Old Lyme CT 06371. Our Office Hours are: Monday - Friday 9 am - 4 pm.

Assessment Date of Taxable Property for the Town of Old Lyme is October 1st of each calendar year.

Per Section 12-41 of the Connecticut General Statutes owners of tangible Personal Property, other than registered motor vehicles, such as commercial furniture, machinery and equipment, leased equipment, unregistered motor vehicles, camp trailers, etc., are required to file a personal property list with the Assessor. Declarations are required to be filed annually during the month of October. Failure to file prior to November 1, 2017 forces the Assessor, by law, to file the list and add a 25% penalty (Sec. 12-42, PA 87-245).

**Totally Disabled Persons** are entitled to an exemption if they meet the requirements of Section 12-81(55) of the General Statutes. Please contact our office for acceptable forms of proof.

**Any individual who is Blind** is entitled to an exemption under Section 12-81(17) shall provide proof to the Assessor.

**Veterans** must have filed a DD214 in the Town Clerk's office by September 30, 2017 in order to receive any of the applicable exemptions under Section 12-81. Sec 12-81(g) provides for an increase in the property tax exemption amount granted to a qualified veteran if certain income requirements are met. Disabled Veterans are eligible for an exemption in addition to the regular exemption with the filing of a disability rating from the Veterans Administration.

Under the Federal Servicemember Civil Relief Act persons on active duty must present to the Assessor a current earning and leave statement or a letter from their Commanding Officer along with a yearly application for exemption. Any Servicemen on active duty claiming Connecticut as their legal residence must file prior to Dec 31st.

Property owners interested in claiming land as farm, forest or open space should file an application before October 31, 2017. The only exception is during a revaluation year, when the deadline is extended to December 30, 2017. No other extension of this filing period is available, failure to file within the prescribed time is a waiver of the right to the classification for the assessment year commencing October 1st.

Melinda R. Kronfeld, CCMA I, Assessor

Contact us at 860-434-1605 x218 & 219 or [assessor@oldlyme-ct.gov](mailto:assessor@oldlyme-ct.gov).

**MAR.**  
 FLORAL & BOTANICALS

Your Local Florist  
 Right Over the Bridge!



Fresh  
 Flowers, Plants,  
 Munson's Chocolates,  
 Daily Deliveries,  
 Parties &  
 Events

140 MAIN STREET - OLD SAYBROOK, CT  
 860-388-4670 - [MARFLORAL.COM](http://MARFLORAL.COM)



## Town Hours & Holiday Schedule

TOWN HALL WILL BE CLOSED ON THE FOLLOWING HOLIDAYS IN 2017:

Monday, October 9 - Columbus Day  
 Friday, November 10 - Veterans Day  
 Thursday, November 23  
 and Friday, November 24 - Thanksgiving  
 Monday, December 25 - Christmas  
 Monday, January 01 - for New Year's Day

### Hours for most departments:

Monday through Friday, 9:00 am - 4:00 pm.

Visit Our Town at  
[www.oldlyme-ct.gov](http://www.oldlyme-ct.gov)

**OLD LYME TOWN HALL • 860-434-1605**  
[www.oldlyme-ct.gov](http://www.oldlyme-ct.gov)

### Old Lyme Municipal Departments

Department	Contact	Phone
Animal Control	Lynn Philomen	434-1605 x244
Assessor	Melinda Kronfeld	434-1605 x218
First Selectwoman	Bonnie A. Reemsnyder	434-1605 x211
Board of Selectmen	Mary Jo Nosal	434-1605 x212
Board of Selectmen	Skip Sibley	434-1605 x212
Building Official	John Flower	434-1605 x230
Emergency Management & Fire Marshal	David Roberge	434-1605 x231
Finance Director	Nicole Stajduhar	434-1605 x232
Harbormaster	Harry Plaut	434-1605 x212
Ledge Light Health District		434-1605 x214 860-448-4882
Information Technology	Ruth Roach	434-1605 x237
Parks and Recreation	Don Bugbee	434-1605 x235
Police	TFC Kazimera Morse	434-7080
Probate Court	Hon. Jeffrey McNamara	739-6052
Public Works	Ed Adanti	434-1605 x243
Registrar of Voters	Catherine Carter & Marylin Clarke	434-1605 x226
Senior Center	Stephanie Lyon Gould	434-1605 x240
Social Services	Jennifer Datum	434-1605 x228
Tax Collection	Judith Tooker	434-1605 x216
Town Clerk	Eileen Coffee	434-1605 x221
Treasurer	Tim Griswold	434-1605 x232
Zoning Enforcement	Keith Rosenfeld	434-1605 x225
<b>OTHER AGENCIES</b>		
Library/Passports	Katie Huffman, Director	434-1684
School District #18	Superintendent of Schools	434-7238
Youth Services Bureau	Mary Seidner, Director	434-7208

 William Pitt | Sotheby's  
INTERNATIONAL REALTY



**Lyme | \$2,590,000**

"Tree Tops", a stunning Shingle-style Colonial with contemporary flair, has been dramatically sited to emphasize absolutely remarkable views of the Connecticut River and beyond. Architecturally designed and custom built using superior materials and craftsmanship.



**Old Lyme | \$390,000**

This is a sweet and functional Cape located close to the village of Old Lyme with an expansive floor plan that incorporates a first floor Master suite with additional space for a sitting room, office or dressing room. This property offers a great location and lots of varied living space.

### Experience the Value of Partnership

**JENNIFER & JANE ASSOCIATES**

Essex Brokerage

2013-2016 Sales of \$105,642,490

#1 Team Companywide 2013, 2014, 2015 & 2016

Licensed in Connecticut and Rhode Island

[jenniferandjane@wpsir.com](mailto:jenniferandjane@wpsir.com)

Jennifer Caulfield  
860.388.7710

Jane Pfeffer  
860.227.6634

ESSEX BROKERAGE  
13 Main Street  
860.767.7488

(Each Office is Independently Owned and Operated. ©)



OLD LYME BROKERAGE  
103 Halls Road  
860.434.2400

## Old Lyme - Community Listings

### USEFUL NUMBERS

CAMP CLAIRE .....	(860) 434-0368
CONSUMER PROTECTION .....	(860) 566-2294
LYMES' YOUTH SERVICE BUREAU .....	(860) 434-7208
SENIOR CENTER .....	(860) 434-1605 x240
OLD LYME VISITING NURSE .....	(860) 434-7808
OLD LYME HISTORICAL SOCIETY .....	(860) 434-0684
9 TOWN TRANSIT .....	(860) 510-0429
LYME/OLD LYME JR WOMEN'S CLUB .....	(860) 501-9773
DEMOCRATIC TOWN COMMITTEE .....	(860) 434-2271
REPUBLICAN TOWN COMMITTEE .....	(860) 434-0740
LYME ART ASSOCIATION .....	(860) 434-7802
VETERANS OF FOREIGN WARS - LYMES' POST 1467 .....	(860) 434-4207
AMERICAN LEGION - POST 41 .....	(860) 664-0047

### SCHOOLS

SUPERINTENDENT'S OFFICE DISTRICT 18 .....	(860) 434-7238
MILE CREEK SCHOOL .....	(860) 434-2209
CENTER SCHOOL .....	(860) 434-7838
MIDDLE SCHOOL .....	(860) 434-2568
LYME/OLD LYME HIGH SCHOOL .....	(860) 434-1651
MULTICULTURAL MAGNET (NEW LONDON) .....	(860) 437-7775

### COLLEGES

LYME ACADEMY COLLEGE OF FINE ARTS .....	(860) 434-5232
---	----------------



**Home • Health • Condo  
Life • Business • Auto**

Contact Jodi Guenther  
about your insurance needs.  
We are located in the  
Old Lyme Marketplace.

**binsurance.com 860.434.1611**

## GESICK & ASSOCIATES, P.C.



- Surveyors
- Mappers
- Planners

**860-669-7799**

**860-739-0090**

[www.gesicksurveyors.com](http://www.gesicksurveyors.com)  
[don@gesicksurveyors.com](mailto:don@gesicksurveyors.com)

## Town Clerk's Office

Eileen K. Coffee, Town Clerk

Vicki Urbowicz, Assistant Town Clerk

### CONGRATULATIONS!

We congratulate the following on their recent marriages:

#### March

Henry John Kmietek & Margaret Lucille Pytlik

#### April

Scott Charles Patterson & Jillian Marie Patterson

Anthony Gerard Bakx & Sarah Lyn Steffanci

John Patrick O'Keefe & Joeli Lora O'Leary

German A. Pugo & Glendy M. De Leon

#### May

Matthew Joseph Blau & Amanda Rae Gallagher

Daniel John Heffernan & Tiare Marie Catrambone

David Keith Higgins & Laura Kay Collins

Frank Alfred Demao III & Brandi Lee Marschat

Mauricio Salazar-Nieto & Camilla Urbano

Timothy Phillip Huitt & Stephanie Marie Montalto

#### June

Michael Adam Roseman & Krystle Marie MacNeil

Hunter Garrett Hardin & Elizabeth Sarah Millman

Carl Edward Douville & Chelsea Ann Dinallo

Darren Tran Le & Christoph Oberli

Jeremy Ryan Shipley & Cornelia Wingfield Twining

Tyler Elliott Gore & Lauren Jean Bergren

Andrew Joseph Staniszewski & Stephanie Anne Freeman

Daniel Scott Hansen & David Douglas Rau

Paul James Simeone & Katherine Rosalie Jones Fuller

Dayton Michael Dell & Sarah Elizabeth Hardy

Michael Kelly Hall & Sarah Ashley Prpich

### WITH SYMPATHY

We would like to express  
our condolences to the  
families of recently deceased  
Old Lyme residents:

#### April

Allan Schmidlapp

William Thurston Hincks

Patricia Rapp Cook

Joseph John Vitali

Edward J. Musil

John Richard (Ernest)

Urbowicz

Carol O'Day Moriarty

#### May

Donald B. Miller Jr.

Nathalie H. Judson

Jeannette Clara Cotter

Denise Anne Wright

Barbara B. O'Connell

Karen E. Marinone

#### June

Daniel Mario Pennella

James Grant

Leon Dennis Holloway

William Paul Huntley

Katherine Leslie Farrell

Gregory E. Kelly





William Pitt

Sotheby's INTERNATIONAL REALTY

Colette Harron  
860.304.2391  
charron@wpsir.com



Platinum Award 2016  
Top Producer 2016  
Diamond Award 2015



**NEWLY LISTED**

Lyme \$735,000  
Spacious open floor plan and one-floor living makes this home ideal for all. Behind impressive stone pillars and conveniently located on a pretty country lane in Lyme.  
Co-Listed with Ellen Henderson 860.961.9643



**UNDER CONTRACT**

Old Lyme \$695,000  
Picture yourself having the best of both worlds. Living by the Old Lyme beaches and close to downtown Old Lyme. A stunning, open floor plan, Colonial in "Beach Farms" subdivision.  
Co-Listed with Jill Gibson 860.235.2209



Lyme \$577,000  
Set on a hilltop with almost 6 acres, surrounded by stately oak trees and woods, sun-filled from dawn to dusk, the five bedroom home flows openly while maintaining individual privacy.  
Co-Listed with Jill Gibson 860.235.2209



Old Lyme \$395,000  
This two Bedroom two Bath home abounds with character and charm. The sun-filled, open, eat-in Kitchen has wood floors, long counters, an abundance of cabinets, a sitting area with views of the expansive lawn and access to the porch. Close to the Old Lyme Village, this home also makes an ideal country retreat.



**SOLD**

Lyme \$872,000  
Unique Landmark Home overlooking Whale Bone Creek, the magical Water Falls and a deep swimming hole, this four bedroom, three and a half bath home, originally a mill.



**SOLD**

Old Lyme \$695,000  
A "Wade Tinker" 1755 Colonial home with three bedrooms, is the epitome of quiet, country living. The sun filled home sits on 1.38 acre lot with sweeping lawn and beautifully designed gardens by Frederick Olmstead.

[coletteharron.williampitt.com](http://coletteharron.williampitt.com)

ESSEX BROKERAGE | 13 MAIN STREET | 860.767.7488 | OLD LYME BROKERAGE | 103 HALLS ROAD | 860.434.2400

Each Office is Independently Owned and Operated.



# Lyme-Old Lyme Chamber of Commerce

## LYME-OLD LYME CHAMBER OF COMMERCE LAUNCHES FALL MEMBERSHIP DRIVE

The Lyme-Old Lyme Chamber meets on the third Wednesday of each month to offer the opportunity for business professionals to network with each other and discuss ideas related to the economic vitality of our towns. If you are thinking about becoming a member, please come to any meeting as a visitor. We would be delighted to welcome you and show you how much membership at just \$50 per year has to offer and how it can benefit your business.

Newly-elected Chamber President, Olwen Logan, intends to continue the efforts of the previous board in focusing on the business community of Lyme and Old Lyme by identifying its needs and working to meet them. She notes that the initial focus of the Chamber's efforts will be to expand the membership of the Chamber by actively working on encouraging lapsed members to re-join and new members to join to create a vibrant, relevant organization. There are a myriad of ways to become involved in the Chamber and if you would like to find out more about all these opportunities, please contact Membership Committee Chairman Rich Shriver at 203-510-5721 or rshriver@healthyaddiction.net.

## LOLCC ANNOUNCES PLANNED PUBLICATION OF 2018-19 MEMBER DIRECTORY AND TOURIST GUIDE

The Chamber is also currently working on publication of a new edition of the Member Directory and Tourist Guide for 2018-19. If you would like to advertise in the Guide, please contact Olwen Logan at 860-460-4176 or editor@lymeline.com. The deadline for submitting an advertisement is Oct. 31, 2017.

During the fall, our meetings will be held on the following Wednesdays, Sept. 20, Oct. 18, and Nov. 15. The Sept. 20 event is a dinner meeting at The Hideaway in the Old Lyme Shopping Center on Halls Rd. Our speaker will be Gregory Stroud, Director of Special Projects at the Connecticut Trust for Historic Preservation, and co-founder of SECoast, who will provide a short update on the favorable NEC Future Record of Decision, what we've accomplished as a community over the last 16 months, and what's left to be done in the years ahead. There will be an opportunity for what we hope will be a lively question and answer, as well as some well-earned celebration. Reservations are required for the evening and can be made online at the Chamber's website at [www.VisitOldLyme.com](http://www.VisitOldLyme.com) or by email to [email@lolcc.com](mailto:email@lolcc.com). The evening starts at 6:15 pm when we gather for cocktails: the cost for the evening including a three-course dinner is \$28.

**LANDSCAPE DESIGN & BUILD  
HAND DRAWN RENDERINGS  
FULL ESTATE PLANS  
RESIDENTIAL • COMMERCIAL • CONDO**

- + IRRIGATION SYSTEMS  
INSTALLS/MAINTENANCE
- + LAWN & LANDSCAPE MAINTENANCE
- + FERTILIZING & TICK CONTROL
- + RETAINING WALLS
- + ARCHITECTURAL PAVERS:  
POOLSIDE & PATIOS
- + NEW LAWN INSTALLATIONS:  
SOD INSTALLS/HYDROSEED
- + EXCAVATIONS & DRAINAGE
- + LANDCLEARING/FOUNDATION:  
DOZER SITE WORK
- + DUMPSTER SERVICES

**SERVING THE SHORELINE AREA *Since 1996***

**Call today for consultation 860-767-2811**  
**[www.sullivanlawnservices.com](http://www.sullivanlawnservices.com)**

CT HIC#06060162 BBB ACCREDITED BUSINESS

FERT #B2547



The Oct. 18 Business After Hours meeting will be held at the Florence Griswold Museum from 5:30 to 7 pm. The Faerieville, USA exhibit will be on display throughout the Museum's grounds with a wee faerie Grocery Store, Post Office, School, Movie Theater and more, in fact, "everything faeries require to get through their whimsical day!" This promises to be a very special event when you can network with other local business professionals, hear the latest news from both the Museum and the Chamber and tour the outdoor exhibit. And keep an eye out for some life-like faeries popping up throughout the town in support and celebration of Faerieville, USA!

Details of the locations for our Nov. 15 Business After Hours and our Holiday Party in December will be announced on our website at [www.VisitOldLyme.com](http://www.VisitOldLyme.com). For details of Chamber news, meetings and other Chamber-sponsored events, visit the Chamber website at [www.VisitOldLyme.com](http://www.VisitOldLyme.com). You can also sign up for our e-newsletters and find our online membership form on the website. And finally, don't forget to Buy Local to support all the businesses in our community!

To download previous issues of Old Lyme Events  
visit: [www.eventsmagazines.com](http://www.eventsmagazines.com)  
and download the issue you desire!



**GINGER DRUCHYK  
ART ADVISORY**

**Fine Art  
Appraisals &  
Consulting**

Private, corporate, &  
museum collections

*Accredited Member of the  
Appraisers Association  
of America*

PO BOX 4031  
Old Lyme, CT 06371

**860.235.8213**

**[gingerdruchyk@gmail.com](mailto:gingerdruchyk@gmail.com)**

*We invite your inquiries*



**Automatic Fuel Oil Delivery  
Diesel  
24-Hour Emergency Service**

**860-388-2298**

FAX: 860-388-5557

Call for more information  
OR visit [moronioil.com](http://moronioil.com)  
for our current prices!

HOD 591  
HTG.0403715-B1  
0303724S1



**Three Generations. Over 60 Years of Continuous Service.**



**Automatic Delivery · Burner Installation · 24 Hour Emergency Service**

Buy Ahead - CAPS & BUDGET PLANS

**Oil as low as \$1.98  
guaranteed for the entire  
heating season.**

For 2017-2018 Heating Season. Limited gallons. Prices subject to change.

# Lyme-Old Lyme Chamber of Commerce Announces Scholarship Winners & Present Special Awards



From left to right, back row: State Rep. Devin Carney, Lyme-Old Lyme Chamber President Mark Griswold, and State Senator Paul Formica. From left to right, front row: Old Lyme Selectwoman Mary Jo Nosal, Lyme-Old Lyme High School Business Department Chair Leslie Traver, Lyme-Old Lyme Chamber Business Students of the Month Cole Hamparian and Reed Spitzer, Old Lyme First Selectwoman Bonnie Reemsnyder and Lyme-Old Lyme Chamber Scholarship Chairman Russ Gomes.

Missing from photo: Lyme-Old Lyme Chamber Business Leadership Senior Scholarship winner Olivia Ellis, Lyme-Old Lyme Chamber Special Award winner Sophie Christiano, and Lyme-Old Lyme High School former Business Department Chair Dr. Joanne Hedwall.

## SCHOLARSHIP WINNERS ANNOUNCED AND SPECIAL AWARDS PRESENTED TO LOL HIGH SCHOOL BUSINESS DEPARTMENT FACULTY

The Lyme-Old Lyme Chamber of Commerce is pleased to announce that Olivia Ellis of Lyme has been selected as the 2017 recipient of the Chamber's Business Leadership Senior Scholarship. Olivia will attend Eastern Connecticut State University in the fall.

The Chamber also selected Sophie Christiano of Old Lyme to receive a Special Award in recognition of her service to the community through her work with the Lyme-Old Lyme Volunteer Connection. Sophie will attend Wellesley University, Mass., in the fall.

Unfortunately both students had out of state commitments on the evening of June 21st when the Chamber's Annual Meeting was held at the Old Lyme Country Club. Both have been invited to attend a Chamber meeting later in the summer or fall, when they can be acknowledged in person by Chamber members and Olivia will be presented with a State Proclamation.  
continued on page 16

**Winter weather is coming.**

Eversource can help you prepare.

Lower your energy use, reduce your energy bills and stay comfortable despite what the winter brings.

Call 877-WISE-USE or visit [EnergizeCT.com/HES](http://EnergizeCT.com/HES) to schedule an in-home energy service.

**EVERSOURCE**

#1 Energy Efficiency Provider in the Nation  
- According to Ceres, 2016 Benchmarking Utility Clean Energy Report

Energize Connecticut - Programs funded by a charge on customer energy bills.



HELPING FAMILIES SAFEGUARD THEIR FUTURE

**CIPPARONE**

**C&Z**

**ZACCARO, P.C.**  
COUNSELLORS AT LAW

TRUSTS ESTATES ELDER LAW REAL ESTATE

261 Williams Street, New London, CT 06320  
860-442-0150 [www.261Law.com](http://www.261Law.com)





GLOBAL  
LUXURY<sup>SM</sup>

WHERE EXCELLENCE LIVES

Marketing Exceptional Properties

Coldwell Banker

A Leader in Luxury for 100+ Years

Coldwell Banker Residential Brokerage | 86 Halls Road | Old Lyme, CT  
860.434.8600

# Pilates for Life

The Tradition and Method of Joseph Pilates

**Joseph H. Pilates**, originator of **Pilates Method**...  
trained **Romana Kryzanowska**, Master Teacher NYC...  
Romana trained **Marlene Powers**, let Marlene train you  
in the true tradition...

Fitness and Flexibility  
Alignment and Posture  
Deep Core Strengthening  
Physical Therapy Compliment  
Certified Instructor  
Over 900 Training Hours  
Mat Classes  
Private Equipment Instruction  
Beginner to Advanced



2010, 2013 & 2015  
Readers Choice

**Best Pilates Studio**

26A Saybrook Road  
Essex, Connecticut

**860-227.5790**

**Celebrating 11 Years!**

**Marlene Powers**

[www.inspiredbypilates.com](http://www.inspiredbypilates.com)

email: [info@inspiredbypilates.com](mailto:info@inspiredbypilates.com)

## Scholarships & Awards... continued from page 14

The Lyme-Old Lyme Chamber established the N. Rutherford Sheffield Memorial Award for Entrepreneurial Promise & Achievement for Lyme-Old Lyme High School juniors in 1999 as a way to honor a man who was not only a member of the Chamber for over 50 years but also a very active and highly regarded member of the Lyme-Old Lyme community. More than 30 juniors at Lyme-Old Lyme High School (LOLHS) were recognized through this program.

This year the Chamber instituted a new program to honor Mr. Sheffield and the Chamber's Scholarship Committee wishes to express its appreciation to LOLHS teachers Leslie Traver, current chair of the Business Department, and Dr. Joanne Hedwall, former chair, for working with them to set up this new program. With their support, the Chamber established the N. Rutherford Sheffield Business Student of the Month Award to continue the Chamber tradition of recognizing members of the junior class for demonstrating outstanding initiative in and out of the classroom. The Chamber hopes this award inspires the Business Students of the Month to continue developing the skills they are learning through their business courses. The students will also be able to list this award on college applications in senior year. The Chamber's 2017 Business Students of the Month were LOLHS Juniors Amanda Marsh, Reed Spitzer and Cole Hamparian, all of whom were invited to attend the Chamber's Annual Dinner Meeting. Cole and Reed were able to attend and spoke eloquently about their achievements to date in the LOLHS Business Department.

The efforts of Traver and Hedwall were acknowledged with awards from the Chamber acknowledging their outstanding support of the Chamber's programs over many years. Traver was present at the dinner to receive her award but Hedwall had another commitment and will be presented with her award at a later date.

The Chamber was especially pleased that both State Senator Paul Formica (R-20th) and State Representative Devin Carney (R-23rd) came to the meeting and joined in the award presentations.

Gabriel Barclay, who was a 2016 winner of the Chamber's Business Leadership Senior Scholarship, was also at the dinner and spoke of the major influence that winning the award had played on his choice to declare business as his major at Georgetown University, Washington, DC, where he has just finished his freshman year.

The Lyme-Old Lyme Chamber of Commerce Scholarship program has awarded over \$33,000 in scholarships and grants to more than 50 local students since its inception. The Chamber Scholarship Fund is supported through



## CONNECTING YOUR CONNECTICUT!

Public Transportation for all ages serving  
Chester, Clinton, Deep River, East Haddam,  
Durham, Essex, Haddam, Killingworth, Lyme, Old  
Lyme, Old Saybrook & Westbrook

### Medical Transportation to Middletown

Connections to Southeast Area Transit buses in New London,  
CT Transit New Haven in Madison, Middletown Transit  
and CT Transit Hartford in Middletown

Call **860.510.0429**  
[www.9towntransit.com](http://www.9towntransit.com)



9 Town Transit is Operated by the  
Estuary Transit District



donations to CMRK clothing donation bins located in Lyme and Old Lyme: at the Lyme Firehouse, behind The Bowerbird, at 151 Boston Post Rd., and on Rte. 156 at Shoreline Mowers.

The Lyme-Old Lyme Chamber of Commerce Scholarship Committee comprises Russ Gomes (Co-Chair), Olwen Logan (Co-Chair), Katie Balocca, Rosemary Barclay, Jane Cable, and Cathy Frank. For more information about the Lyme-Old Lyme Chamber, visit [www.visitoldlyme.com](http://www.visitoldlyme.com).

## Registrars of Voters

Marylin Clarke (D) and Cathy Carter (R)

**MUNICIPAL ELECTION DAY IS TUESDAY,  
NOVEMBER 7, 2017.**

The polling location is Cross Lane Firehouse from 6:00 am to 8:00 pm.

The location for Election Day Registration (EDR) is the Registrars Office, Mezzanine Level, Town Hall, 6:00 am to 8:00 pm.

**The Registrars will hold extended hours on the following dates:**

Tuesday, October 3, 2017 1 to 4 pm.

Tuesday, October 31, 2017 9 am to 8 pm.

Monday, November 6, 2017 9 am to 5 pm

**Registration Deadline is October 31, 2017** for mail-in registration, online registration (until 11:59 p.m.), and in-person registration to be eligible to vote in the November 7, 2017 Municipal Election.

*(See exception below)*

**Limited Registration Exception:** Those whose right as to age, citizenship or residence was attained since October 31st may apply in the office until 5 pm on November 6, 2017.

Seventeen-year-olds who will turn 18 on or before Election  
**continued on page 18**



**AJ Shea Construction**

[ajshea.com](http://ajshea.com)


**Connecticut Emissions Program** **IRVING**



147 Boston Post Road  
Old Lyme, CT 06371  
M-F 7 am - 5 pm ~ Sat 7 am - 12 noon  
**860-434-2265**  
[www.allproautomotive.com](http://www.allproautomotive.com)

**Exencial**  
Wealth Advisors

Explore. Execute. Excel.



**Providing Principled, Personalized Planning  
&  
Disciplined Investment Management guided  
by research-based financial principles**

Thomas P. McGuigan, CFP®  
[tmcguigan@ExencialWealth.com](mailto:tmcguigan@ExencialWealth.com)

Jean A. Wilczynski, CFP®  
[jwilczynski@ExencialWealth.com](mailto:jwilczynski@ExencialWealth.com)

187-B Boston Post Road, P.O. Box 623  
Old Lyme, CT 06371 (860) 434-5999  
[www.ExencialWealth.com](http://www.ExencialWealth.com)

Investment Advisory Services offered through Exencial Wealth Advisors, a SEC-Registered Investment Advisor.

## Registrars of Voters... continued from page 17

Day (born on or before 11/7/1999) may register to vote.

Voter Registration Applications and Applications for Absentee Ballots are available from the Town Clerk's Office. Absentee Ballots become available from the Town Clerk on October 6, 2017.

Online voter registration is available 24/7 and is user-friendly. Go to [www.voterregistration.ct.gov](http://www.voterregistration.ct.gov) OR go to the Secretary of the State's website - [www.SOTS.ct.gov](http://www.SOTS.ct.gov), choose "Elections & Voting" and you will see "On-line registration." Using online voter registration, you can also make changes to name, address,

and/or party affiliation. You will also see a very helpful link if you want to know if you are registered and how you are registered, select "Am I Registered to Vote?" then click "Voter Lookup Tool."

We want to help you be prepared for this Election. We encourage you to register to vote or update your information with a new address or name in advance. This will minimize confusion and delays at the polls, a benefit to you, the voter, and to the election officials. As always, if you have questions, please contact us at our Town Hall Office 860-434-1605 ext. 226.

## Municipal Election

On November 7, 2017, voting for the Municipal Election will take place at the Cross Lane Firehouse, 6:00 am to 8:00 pm.

**The Town Clerk's Office has on file the certified lists of Republican and Democratic party-endorsed candidates for the Town of Old Lyme**

### for the following offices:

First Selectman, Selectman, Town Clerk, Board of Finance, Board of Finance Alternates, Board of Assessment Appeals, Planning Commission five-year term begins 2017, Planning Commission five-year term begins 2018, Zoning Commission 5-year term begins 2017,

Zoning Commission 5-year term begins 2018, Zoning Board of Appeals 5-year term begins 2017, Zoning Board of Appeals 5-year term begins 2018, Zoning Board of Appeals Alternates, Regional Board of Education.

Absentee Ballots will be available in the Town Clerk's Office on October 6.

### Niantic Acupuncture & Family Wellness



Maggie Barili RN, LAc.  
Lic.Acupuncturist, Herbalist



Carlos Sepulveda MS, LAc,  
Lic. Acupuncturist, Herbalist



Stephanie Roers, LMT  
Lic.Massage Therapist

#### Serving Our Community

As a team, we specialize in Preventive, Internal Medicine, Sports & Orthopedic Medicine, Trauma & Pain Management, Addiction, Digestive Health, Disorders of Stress, Anxiety and much more...

17 Hope Street ◀ Niantic, CT  
(860) 451-5558

[www.NianticAcupuncture.com](http://www.NianticAcupuncture.com)

We are providers for the Veteran's Choice Network  
We accept some insurances  
Health Spending Accounts do cover Acupuncture

CT License  
E1-123441

## SICURANZA ELECTRIC, LLC



John Sicuranza  
Owner / Electrician

[www.SicuranzaElectric.com](http://www.SicuranzaElectric.com)  
email: [seco4343@aol.com](mailto:seco4343@aol.com)

### 860-434-4343

Specializing in all Residential  
& Commercial work

- |  |  |
|--|--|
| <input checked="" type="checkbox"/> Service Upgrades     | <input checked="" type="checkbox"/> Troubleshooting    |
| <input checked="" type="checkbox"/> Generators           | <input checked="" type="checkbox"/> Network Cabling    |
| <input checked="" type="checkbox"/> Surge Suppressors    | <input checked="" type="checkbox"/> Landscape Lighting |
| <input checked="" type="checkbox"/> Smoke / CO Detectors | <input checked="" type="checkbox"/> Marine Wiring      |



# Trash and Recycling

Curbside trash removal is performed by Old Lyme Sanitation (860-434-3800).

## THERE IS NO TRASH PICK-UP ON THE FOLLOWING HOLIDAYS:

Christmas (Dec. 25), New Year's (Jan. 1), Memorial Day (last Monday in May), July 4th, Labor Day (first Monday in Sept.), and Thanksgiving Day (fourth Thursday in Nov.). Trash normally collected on Thanksgiving is picked up the next day, along with the regular Friday pickup. For other holidays, trash pickup moves to the following day, until Thursday and Friday, which remain on schedule. Please be advised that Old Lyme Sanitation DOES NOT take off the same Holidays as the Town does.

Please have trash containers out at curbside by 6 am on your assigned day. Containers should be three feet away from any other objects, such as mailboxes, cars, other containers, planters, etc. Please be mindful not to block breakdown/emergency lane with receptacle. Clearly mark your address on recycling and trash receptacles to avoid mix up, removal or displacement of cans. Phone Michele Hayes at: 860-434-1605, ext. 212 with any additional trash removal questions that you may have.

Single stream curbside recycling pick-up is provided for clean

bottles, cans, #1 - 7 plastics and paper products co-mingled in the green recycling carts every other week. Corrugated cardboard boxes need to be flattened for recycling. A complete list of acceptable single stream recyclables is available on the Town's website: [www.oldlyme-ct.gov](http://www.oldlyme-ct.gov) click the trash and recycling link on the Selectman's or Public Works pages or at [www.shorelinesanitation.com](http://www.shorelinesanitation.com). Information is also available in the Selectman's Office at the Memorial Town Hall, 52 Lyme Street, and at the Landfill/Transfer Station on Four Mile River Road. Please phone Michele Hayes at: 860-434-1605, ext. 212 with any additional questions you may have.

**Curbside recycling** is performed every other week by Old Lyme Sanitation (860-434-3800). There is no recycling pick-up on the following Holidays: Christmas Day (Dec. 25), New Year's (Jan. 01), Memorial Day (last Monday in May), July 4th, Labor Day (first Monday in Sept.), and Thanksgiving Day (fourth Thursday in Nov.). Recycling normally collected on Thanksgiving is picked up the next day, along with the regular Friday pickup. For other holidays, recycling pickup moves to the following day, until Friday, which remains on schedule. Recycling information is available on the Town's website ([www.oldlyme-ct.gov](http://www.oldlyme-ct.gov)), as well as in the Selectman's Office at the Memorial Town Hall, 52 Lyme Street. **continued on page 20**

**Let us design your kitchen**



*Decor*

**...Or replace your windows**



Andersen  
AW  
WINDOWS • DOORS

**Shagbark**  
Lumber & Farm Supplies, Inc.

SINCE 1936

f i

**Food, Flavor, Friends, Family**

**Free Propane tank and fill with any Weber Gas Grill purchase E-210 or higher!**

**Time for Grilling!**



**Genesis® II SE-410™ LP Gas Grill**  
48000 BTU 646 sq in. cooking area 198 sq in. Tuck away warming rack. 4 Stainless steel burners. Stainless steel rod cooking grates. Easy access fuel tank with gauge. Black, Copper, Crimson, Smoke

**Genesis® II E-310™ LP Gas Grill**  
37500 BTU 513 sq in. cooking area 156 sq in. Tuck away warming rack. 3 Stainless steel burners. Porcelain enamel cast iron cooking grates. Black

**Or Genesis E-210 \$499 215387**

**We Deliver**

Mt. Parnassus Rd. & Route 82. East Haddam, CT Call or see web for directions 860.873.1946 [www.shagbarklumber.com](http://www.shagbarklumber.com)

## Trash & Recycling... continued from page 19

Street, or at the Landfill/Transfer Station on Four Mile River Road. Clearly mark your address on recycling and trash receptacles to avoid mix up, removal or displacement of cans. Phone Michele Hayes at: 860-434-1605, ext. 212 with additional questions you may have. Additional automated trash and recycling containers should be ordered through Michele Hayes at:

860-434-1605, ext. 212 in the Selectman's Office at the Memorial Town Hall, 52 Lyme Street. Containers cost \$80. Please mark clearly your address on recycling and trash receptacles to avoid mix up, removal or displacement of cans. Homeowners are responsible to replace lost, stolen or broken cans at their expense.

## Transfer Station Information

### Transfer Station/Landfill Hours:

The Transfer Station is located on Four Mile River Road and is open Tuesday-Friday, 7:30 am-3:45 pm, Saturday, 8:30 am-4:00 pm. Closed Sunday and Monday. Taxpayers' vehicles should have a Transfer Station sticker affixed to the right-hand side of windshield. Vehicles without a sticker should bring proof of property address (i.e., tax bill, mortgage statement or closing papers), along with a driver's license and registration.

**The Transfer Station will be closed on the following Holidays:**

Friday November 10, 2017  
- Veterans Day  
Thursday, November 23 and  
Friday, November 24, 2017  
- Thanksgiving

The Transfer Station will be open at 8:30 am on Saturday, November 25, 2017

### Bulky Waste and Demolition:

Vehicles will be charged by weight at \$110/ton. Recyclables should not be mixed in the same load with Bulky Waste or Demolition debris. Loads less than 100 lbs. are charged a minimum fee of \$5.

**Brush** is charged on a per load basis. No wood or limbs thicker than four inches are accepted.

**Grass clippings** are not allowed at the Transfer Station because of chemical contamination from pesticides and fertilizers and cannot be deposited in your trash can. Please compost on your property.

**Electronics** are now accepted at the Transfer Station. Residents can bring the following items to the Transfer Station on Four Mile River Road: computers (personal computers, mainframes,

**LEW  
THE  
PLUMBER**

ARTHUR LEWIS  
Owner

44 Center Beach Avenue  
Old Lyme, CT  
06371

**860  
434-5862**



**Caliber Computing**

Charles E. Delinks, Jr.  
[www.calibercomputing.com](http://www.calibercomputing.com)

*Since 1993*

### Computer Systems & Networks

- Virus & Spyware Removal
- DSL & Cable Broadband
  - Network & Email Configuration
- Sales, Installations & Upgrades

**20 Homestead Circle  
Old Lyme, CT 06371**  
(860) 434-1926 phone  
(860) 823-9250 cell  
[ced@calibercomputing.com](mailto:ced@calibercomputing.com)



- Septic Tank Cleaning
  - Video Camera Inspections
- Discounts for Veterans, Seniors, and Neighbors

License #006157  
Fully Insured

**860-912-5204**  
[www.saltwaterseptic.com](http://www.saltwaterseptic.com)

Locally Owned and Operated  
by Blair Carignan

med-range computers, laptops); networking equipment (hubs, switches, control cards, etc.); computer monitors, televisions, printers, keyboards, mice, adaptors, stereos, speakers, VCRs, scanners, fax machines, copiers telephones and

telephone systems, computer wire and cable; computer drives and storage devices (floppy drives, CD ROMs, hard drives), power supplies, circuit boards, microwaves, scrap copper (cable, pipe, etc.), scrap aluminum (machine and machine

parts, cable extrusions, etc.), fluorescent light bulbs, UPA (uninterrupted power supply) batteries, and related computer and electronic equipment.



## A Guide to Recycling

### INS & OUTS OF RECYCLING

**Basic Guidelines:** All items should be empty, rinsed, clean and open. Do not shred, box, bag or bundle.

#### WHAT'S IN

**Paper:** Cardboard, boxboard, food & beverage cartons, junk mail, magazines & newspaper inserts newsprint, office paper, pizza boxes

**Glass:** Beverage bottles & jars, food bottles & jars

**Metal:** Aerosol containers (food grade only), aluminum foil, cans & bottles, foil containers, lids from cans & bottles

**Plastic:** Bottles (with or without caps), containers, tubs & lids, one-use cups (no lids or straws)

*To learn more, go to [RecycleCT.org](http://RecycleCT.org)*

#### WHAT'S OUT

**Paper:** Gift wrap & bags, ice cream containers, paper cups (hot & cold), shredded paper, takeout food containers, tissue paper

**Glass:** Ceramic mugs & plates, drinking glasses

**Metal:** Aerosol containers (deodorizers, cleaners, pesticides), foil yogurt tops, paint cans, pots & pans, scrap metal, spiral wounds

**Plastic:** Loose bottle caps, bags & wrap, plates, bowls & utensils, prescription bottles, single-use coffee containers, Styrofoam cups, packaging peanuts, water filters

## TRUST YOUR CAR TO THE REPAIR SHOP MORE PEOPLE TRUST...

*We are a full service garage dedicated to quality work and service.*

**"The Only Call You Need For Quality Service & Repairs"**

# AUTO SERVICE of Old Saybrook, Inc.

**We have Senior Citizen Day Every Day!  
We Offer 10% OFF Repairs and Service up to \$50.00 Maximum.**



We employ ASE  
Certified Technicians

Servicing Domestic & All European Cars Including  
Mercedes, BMW, Jaguar, Audi, Saab, Volvo & VW



## 860-388-6838

From oil changes & scheduled maintenance to engine repair or replacement, we can provide complete mechanical & electrical service to your vehicle.



**4 JADE COURT • OLD SAYBROOK**

**HOURS: MON. - FRI. 8 a.m. - 5 p.m.**





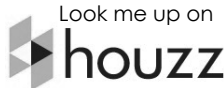
# MARK REEVES, BUILDER

860-388-3825

*Fall Renovation Time!*



New Homes • Whole House Remodels • Additions  
Kitchens • Bathrooms • Basement Conversions  
Siding & Windows • Entertainment Centers  
Flooring • General Remodeling



Look me up on

CT LICENSE # 538583 & 10263  
FULLY INSURED

MARKJREEVESBUILDER@COMCAST.NET  
WWW.MARKREEVESBUILDER.COM

# Lyme-Old Lyme Schools



## LYME-OLD LYME SCHOOLS OPEN THEIR DOORS ON A NEW ACADEMIC YEAR

Lyme-Old Lyme Schools opened for the 2017-18 academic year with the largest Kindergarten enrollment in several years. Teachers welcomed students into classrooms, which had been thoroughly cleaned and painted over the summer. The mood was cheerful in anticipation of an exciting and fulfilling year ahead.

Commenting on the Kindergarten enrollment that has required a new class section to be added at Mile Creek School



to accommodate the increased numbers, Superintendent Ian Neviasser said, "It's very encouraging to have this large Kindergarten class. We will continue efforts to market our schools in an effort to maintain, and hopefully grow, our overall enrollment."

While the principals at Lyme, Mile Creek and the High School continue in their roles, a new leadership team is in place at Lyme-Old Lyme Middle School (LOLMS) this year with the appointment of Mark Ambruso as Principal and Noah Ventola as Assistant Principal. Former LOLMS Principal Michelle Dean is now serving as Director of Curriculum for the District.

Lyme-Old Lyme students are involved in a number of extra curricular activities including fall sports teams for soccer, football (in a co-op arrangement with Valley Regional High School), cross-country and girls' volleyball. Members of the community are welcome and encouraged to support these

## FALL ACTIVITIES AT LYME SHORES

### After-School Tennis Programs for Kids

*Eight-week sessions throughout the school year starting Aug. 28*

#### Big Shots (ages 4-6)

Tue. or Thu., 4-5pm

#### Local Excellence (ages 10-12)

Tue. & Thu., 4-5pm

#### Future Stars (ages 7-9)

Tue. & Thu., 4-5pm

#### Tournament Tough (ages 13-15)

Mon. & Wed., 4-5:15pm

#### Team Connecticut

Mon. & Wed., 5:15-6:30pm

For competitive junior players

#### High School

Boys- Fri., 3:30-5pm

Girls- Sat., 9-10:30am



### Adult Programs

*Drop in to our fitness, pickleball and tennis programs!*



#### Strength & Balance

M/W/F, 10am

#### Drop-in Pickleball

Mon., 1-3pm, Beginners welcome

#### Stability Ball

Mon., 8am

#### Adv. Beginner Tennis Drills

Tue., 9-11am

#### Yoga

M/W, 11am

#### Intermediate Tennis Drills

Mon., 10:30am-12pm

#### Circuit Training

T/Th/Sa/Su, 8am

#### NTRP Tennis Drills

Sat., 10:30am-12pm, All levels

#### Cardio & Strength

Fri., 8am

#### Cardio Tennis

Wed., 6-7pm, All levels

5P850JD

Learn more:

(860) 739-6281

www.lymeshores.com



22 Colton Road  
East Lyme, CT 06333

student athletes as they compete throughout the season. Details of times and locations of games/meets are on the Connecticut Interscholastic Athletic Conference website at [www.casciac.org](http://www.casciac.org). Details for other extracurricular activities can be found on the district website at [www.region18.org](http://www.region18.org).

Lyme-Old Lyme High School will host an Open House on Friday, Oct. 20, for prospective students who do not currently attend a Region 18 school. In order to offer a customized experience, interviews are being offered throughout the day to accommodate varying schedules. Interviews will be preceded by a student-led tour of the high school. In terms of the type of students and/or families the District is aiming to attract, Neviasser explains, "This event is offered for students in a variety of situations such as students whose families are looking to move to the area, students who reside in town but attend private, parochial, or magnet schools, and tuition-paying students who live in other towns."

If you would like to attend the October 20 Open House, call Glynis Houde at 860-434-2255 to schedule your appointment. If you have any other questions regarding the Lyme-Old Lyme Schools, please contact Superintendent Ian Neviasser at 860-434-7238.

## Lyme-Old Lyme Education Foundation

### WHAT HAS THE LYME-OLD LYME EDUCATION FOUNDATION BEEN UP TO THIS YEAR?

The short answer is "fulfilling our mission to support innovative and effective learning opportunities in our community." Below are a few of the grants we have awarded. Please visit our website, [www.lolef.org](http://www.lolef.org), to see how we are supporting learners of all ages, from pre-school to senior citizens.

- **A grant for STEM Curriculum** at Lyme-Old Lyme Middle School: Science, Technology, Engineering and Math instruction for students in grades 6, 7, and 8. Topics include introductions to chemical engineering, environmental landscaping, bio-engineering and green engineering. The Foundation also funded a grant for a 3-D Printer and the coordinated curriculum in architectural engineering, wood production, and technical writing for our Middle School students.
- **The "Science in Nature" program** through Old Lyme's Roger Tory Peterson Estuary Center provides 3rd, 4th and 5th-graders at Mile Creek and Lyme Consolidated Schools the opportunity to use real scientific equipment in field studies at the nearby Mile Creek and Eight Mile River Preserves. They are taught to make observations about environmental factors and wildlife habitation. This program also introduces their teachers to Next Generation science standards.

continued on page 24



**THE HIDEAWAY RESTAURANT & PUB**

**Old Lyme Shopping Center**  
Exit 70 off I-95, Halls Road, Old Lyme  
860-434-1455 or 860-434-3335

**Serving Sunday Breakfast**  
**10 am - 3 pm**

**Lunch Specials 11 - 3**

**At the Bar \$6 Lunch, \$2 Drafts**

FRESH LOCAL SEAFOOD



**50% ANY ENTREE!**

Buy One Entree at Regular Price, Get 2nd of Equal or Lesser Value 50% Off

With this coupon. One coupon per table. Excludes tax and gratuity. Not valid with other offers or on holidays. Expires 10/26/2017

**\$10 OFF TOTAL BILL!**

Of \$50.00 Or More

With this coupon. One coupon per table. Excludes tax and gratuity. Not valid with other offers or on holidays. Expires 10/26/2017

**\$5 OFF TOTAL BILL!**

Of \$25.00 Or More

With this coupon. One coupon per table. Excludes tax and gratuity. Not valid with other offers or on holidays. Expires 10/26/2017

*Steaks • Seafood • Pasta • Sandwiches and More!*



**JOIN US FOR AN OPEN HOUSE OR WORKSHOP!**

**Contact club for more details**

 Always open

17 Liberty Way  
Middletown, CT 06457  
860.671.1811

 Friendly support

24 Hartford Road  
Salem, CT 06420  
860.850.1010

 Welcoming environment

**ANYTIME FITNESS**  
*Get to a healthier place.™*

Available at multiple fitness clubs in Middletown and Salem, CT. Expires November 30, 2017 ©2017 Anytime Fitness, LLC



## Lyme-Old Lyme Education Foundation... continued from page 23

- A recent grant application had the whole LOLEF board excited! Through this grant, students of all ages will benefit from a Google Expeditionary Technology classroom. Twenty sets of virtual reality gear will enable students and their teachers to explore a wide variety of subject areas from biology, anatomy, and the physical sciences to history and geography. This “classroom” can serve all our schools and is suitable for all ages.
- LOLEF funded the purchase of 5 computers and instructional time to the Lymes’ Senior Center Internet Education Program. Our seniors can now learn about computer and internet usage, including writing documents, sending email and researching on the internet.



LOLEF’s Bound for the Sound Race for Education draws runners of all abilities. We hope to see you there!

### HOW DO WE DO ALL THIS?

We have an active board of volunteers who review grant proposals and hold fundraising events throughout the year. The next two events are right around the corner.

- September 23rd, 2017 is our annual Bound for the Sound, 5k and 10k Race for Education, which starts at Sound View Beach and winds through the town’s picturesque natural vistas. The race course is mostly flat with some gently rolling hills along country roads, ending with a sprint down historic Hartford Avenue to the beach. There is also a 1-Mile Fun Run. <http://www.lolef.org/events>.
- December will bring our showing of the 2017 Warren Miller Ski Film. This event is so popular that we have to abide by the production company’s strict advertising guidelines and cannot share the exact date or title until close to the show date. Local ski vendors display current equipment, along with a large range of prizes (outerwear, lift tickets, latest ski gear & much more). Stay tuned for the date & film title!

We also have amazing donors and Partners in Education! If you are impressed by what we are doing for our community, please visit the annual appeal page on the website - [lolef.org](http://www.lolef.org) - and contribute to the next wave of learning for Lyme-Old Lyme. Do you have an idea that fits the mission of LOLEF? We want to hear it! Learn more about grant criteria and consider applying by visiting [www.lolef.org](http://www.lolef.org).

## Rogers Lake Authority News

Every leap year Rogers Lake is to be lowered in the fall so that landowners can perform any maintenance at the water’s edge. That did not happen this past year because of the drought. The drawdown will take place this fall as follows:

- The drawdown will start after Labor Day and the full drawdown of a maximum of 14 inches should occur by mid-September.
- The drawdown will be maintained from mid-September to the first of November.
- The Rogers Lake Authority can be contacted at [Rogers-Lake-Authority@googlegroups.com](mailto:Rogers-Lake-Authority@googlegroups.com).

The Rogers Lake Authority asks for your assistance in reporting unsafe activity occurring on Rogers Lake anytime of the year. To report any unsafe activities, please use the form that is available on the Rogers Lake Authority website [http://www.oldlyme-ct.gov/Pages/OldLymeCT\\_BComm/rogers\\_lake/index?textPage=1](http://www.oldlyme-ct.gov/Pages/OldLymeCT_BComm/rogers_lake/index?textPage=1) Click on “Report Boating Violation.” Thank you for your assistance.

Connecticut State law 12-155 prohibits the use of a fertilizer containing phosphorous less than 20 feet from any body of water. A \$500 fine is imposed on violators. If you have questions on the phosphorus legislation or soil testing, call the UConn Home & Garden Education Center at 877-486-6271.



**Providing knowledgeable, professional Volvo service since 1986. We also service other European makes. Please inquire.**

- Expert service at reasonable prices
- Scheduled maintenance and repair services
- Wheel alignment services
- Volvo factory diagnostic and service information system
- Large inventory of quality parts in-stock for prompt repairs

**8 Colton Road, East Lyme**  
Conveniently located just off of I-95 Exit 71

**860.739.4894**

Please visit us at:  
**euroautoltd.com**






# Old Lyme Phoebe Griffin Noyes Library



2 Library Lane,  
Old Lyme, CT 06371,  
860.434.1684  
[www.oldlyme.lioninc.org](http://www.oldlyme.lioninc.org)

The Old Lyme-Phoebe Griffin Noyes Library continues to fulfill its mission to inspire lifelong learning and discovery in a welcoming place with exceptional resources, programs, and services. From developing fun, interactive story times for babies and toddlers to hand-delivering novels to homebound patrons, the Library continues to provide opportunities for residents of all ages to learn and grow.

## Children's Events

Julie Bartley/Children's Librarian  
[jbartley@oldlyme.lioninc.org](mailto:jbartley@oldlyme.lioninc.org)  
860.434.1684 x114

### Toddler Time Tuesdays

(Recommended for ages 2-5):

Tuesdays at 10:30 am, October 3, 10, 31;  
November 7, 14, 21; December 5, 12, 19

### Baby Time Thursdays

(Recommended for ages 0-2):

Thursdays at 10:30 am, October 5, 12;  
November 2, 9, 16; December 7, 14, 21

### Sweet Beats Family Music with Eleanor Robinson:

Wednesdays, October 11, November 8,  
December 13 at 5:30 pm

### Animal Camouflage! Nature's Disguises with the DPNC:

Wednesday, October 25 at 5:30 pm  
(Registration requested)

### Halloween Festivities at the Library!:

Wednesday, October 31

- **Toddler Time at 10:30 am:**

Wear your costume to story time and hear some spooky stories!

- **Haunted BookCellar from 3-6 pm:**

Creep downstairs and visit...if you DARE!

- **Trick or Treat at the Library**

**from 5-7 pm:**

Make the Library one of your Trick or Treat destinations as you head down Lyme St.

### Tellebration! with The Connecticut Storytelling Center:

Wednesday, November 1 at 5:30 pm  
(Registration requested)

### Nutcracker Story Time with Eastern CT Ballet:

Wednesday, November 15 at 5:30 pm  
(Tentative date - check website for details)

### A Wonder-ful Celebration!:

Thursday, November 16 from 3-5 pm  
(Registration requested)

### A Pirate Story Time with Free Men of the Sea:

Saturday, December 2, 11 am

### All Ages School Vacation Story Time:

Tuesday, December 26 at 10:30 am

### All Ages School Vacation Story Time:

Thursday, December 28 at 10:30 am

### Teddy Bear Sleepover Drop-off:

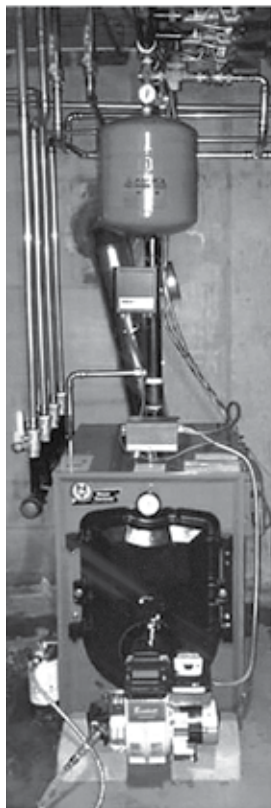
Wednesday, December 27 from 2-5 pm

### Teddy Bear Sleepover Pick-up:

Thursday, December 28 from 9-10 am

For complete details, visit our website at [www.oldlyme.lioninc.org](http://www.oldlyme.lioninc.org).

continued on page 26



**If your boiler does not look like this  
you are wasting \$400/per year.**

**MORONI  
& SON**  
**860-388-2298**

**PRE-SEASON  
SALE!**

**Call for our Current  
2017-2018 Oil Plans**

**FULL SERVICE OIL COMPANY**

**447 Spencer Plains Road, Westbrook, CT 06498**

- Automatic Fuel Delivery • Burner Installation
- 24-Hour Emergency Service

HOD 591  
HTG.0403715-B1  
0303724S1



**[www.moronioil.com](http://www.moronioil.com)**

## Library... continued from page 25

### Young Adult Events

Nike Desis/Young Adult Librarian  
ndesis@oldlyme.lioninc.org  
860.434.1684 x116

Check out our online calendar for the most up-to-date events listings and to register for our programs. Find us at: [www.oldlyme.lioninc.org/events](http://www.oldlyme.lioninc.org/events).

Looking for a fun and community orientated place to volunteer? What about a place where you can learn job skills and make your resume sparkle? We've got you covered! Our volunteer program, Teen Library Council, is looking for help this fall! Submit a TLC application on the Teen page of the library's website: [www.oldlyme.lioninc.org/tlcapp](http://www.oldlyme.lioninc.org/tlcapp).

#### FIELD TRIP

##### Kriable Library:

Friday, October 6 at 1 pm  
(Pre-registration required)

#### HARRY POTTER FAN CLUB:

Join us as we share our Potter passion this fall! (Registration requested)

- **House Sorting and Wand Making:**  
Thursday, October 12 at 3:30 pm
- **Dumbledore's Army:**  
Thursday, October 26 at 3:30 pm
- **Quidditch Match:**  
Thursday, November 16 at 3:30 pm
- **Yule Ball:**  
Thursday, November 30 at 3:30 pm

#### DIY Skeleton Shirt:

Friday, October 13 at 3:30 pm  
(Registration requested)

#### Origami Basics - Part 1:

Saturday, October 14 at 12:45 pm  
(Registration requested)

#### Anime Club:

Anime Club meets monthly; we watch Japanese cartoons, eat snacks, and make a craft!

- **Creepy Cards Edition:**  
Thursday, October 19 at 3:30 pm
- **Sticker Bomb Edition:**  
Thursday, November 9 at 3:30 pm

#### Haunted Cellar - Call for Helping Hands:

Wednesday & Friday, October 25 & 27  
from 3-5 pm

#### Graphic Language! Book Club:

Tuesdays, October 31, November 21,  
and December 19 at 3:30 pm

#### Origami Basics - Part 2:

Saturday, November 11 at 12:45 pm  
(Registration requested)

#### Stocking Stuffers - DIY Taco

##### Earbud Holder:

Tuesday, December 5 at 3:30 pm

#### 3D Printer Meet-up and Info Session:

Thursday, December 12 at 5 pm

#### Stocking Stuffers - Dog Treats:

Friday December 22 at 3:30 pm

Special thanks to Burdick Oil for sponsoring our Young Adult Events!

### Adult Events

Katie Huffman/Director  
khuffman@oldlyme.lioninc.org  
860.434.1684 x110

#### Phoebe's Morning Book Chat:

Second Thursday of the month  
October 12, November 9,  
December 14 at 11:15 am

#### Contemporary Classics Book Discussion:

Meets monthly at 7 pm  
Monday, October 2; Wednesday,  
November 1; Monday, December 4

Additional adult events for October - December are currently being planned. Check our website at [www.oldlyme.lioninc.org](http://www.oldlyme.lioninc.org) for more events and complete details.

#### SIGN UP FOR OUR E-NEWSLETTER

at [www.oldlyme.lioninc.org](http://www.oldlyme.lioninc.org)  
The Library does not distribute or sell our patron email list to any commercial or nonprofit business. We use your email solely for contacting you about library programs, special events, and announcements.

#### PHOEBE'S BOOKCELLAR

Wednesdays 10 - 6 pm  
Saturdays 10 - 2 pm  
Contact us at 860-434-1684 x117

#### ANNUAL HOLIDAY SALE

The BookCellar at the Old Lyme PGN Library is pleased to invite you to our annual Holiday Book Sale. We will feature

thousands of affordable, gently used books for sale from all genres - including, but not limited to a collection of first edition hardcovers, history, biography, Christmas, children and young adult, as well as a large collection of rare and collectible books, and DVDs and CDs.

#### • Celebratory Sale Event:

Friday, December 1 from 4-7 pm  
Join us in the Library's Reading Room for a fabulous, hand-selected collection of books plus checkout our map prints of Old Lyme and surrounding towns from the 1868 Atlas of New London County (\$10 each). Enjoy live music and libations while you browse.

#### • ½ Sale in the BookCellar:

Saturday, December 2 from 9 am-2 pm  
Shop the Library's Reading Room for a fabulous, hand-selected collection of books plus visit the BookCellar for ½ price on ALL items.

#### • A Pirate Story Time with Free Men of the Sea:

Saturday, December 2 at 11 am  
Stop by for this much-anticipated special story time and stay to take advantage of the bargain prices in the BookCellar.

The BookCellar is a highly successful used book store - Old Lyme's only bookstore - managed by the volunteer Friends of the Library and housed on the Old Lyme Library's lower level. Please stop by to shop, drop off book donations, or become a volunteer. Choose from thousands of books of all genres, including hard cover and paperback fiction, art, business, classics, cooking, language, literature, music, parenting, pets, sports, world history, books for children, young adults. We also have a large collection of rare & collectible books, as well as DVDs & CDs.

When you're in the Library lobby, be sure to browse the on-going sale of books located on the cabinets across from the Circulation Desk.

Every dollar earned at the BookCellar goes directly to support the Library's programs, collections and equipment.

# BALLEK'S GARDEN CENTER



***It's Time to Plan for Fall Plantings!***

**FULL SERVICE GARDEN CENTER**

Great Selection of Annuals, Perennials, Trees & Shrubs

**FULL SERVICE FLORIST**

Gardening Gifts & Fresh Cut Flowers

**LANDSCAPING**

Walls, Walks, Patios, Tree and Garden Installation

***Sharing Our Knowledge & Passion for Gardening with you!***

**860-873-8878**

90 Maple Avenue, East Haddam, CT  
[www.BalleksGardenCenter.com](http://www.BalleksGardenCenter.com)

BEDFORDBUILDS.COM  
(860) 304-6817

# BEDFORD

CONSTRUCTION & WOODWORKING, LLC

- ~ Additions ~
- ~ Renovations ~
- ~ Interiors ~
- ~ Kitchen & Bath ~



REMODEL WITH PURPOSE

# LAWN CARE SERVICES

FERTILIZING • CRAB GRASS CONTROL • WEED PREVENTION  
INSECT & GRUB TREATMENTS • LIMING & SOIL TESTING • AERATION

## GREENSCAPE OF CLINTON LLC,

Fall is the ideal time to repair your lawn by  
OVERSEEDING, AERATING AND FERTILIZING DAMAGED TURF.

Call us now for free lawn care consultation.



# GREENSCAPE

of Clinton, LLC

## LAWNS CARED FOR

SINCE 1987

**(860)669-1880**

For Your Free Estimate Call Frank Byrne

[www.greenscapeofclinton.com](http://www.greenscapeofclinton.com)



**We Care About Your Lawn.**

B# 1997 Commercial and Residential





## Lymes' Youth Service Bureau

59 Lyme Street, Old Lyme, CT 06371

860-434-7208, [www.lysb.org](http://www.lysb.org)

### THE POWER OF SOCIAL MEDIA:

#### A Presentation for Parents & the Community

Tuesday, October 3, 2017 at 7:00 pm at LOLHS Auditorium

With guest speaker Tom Pincince is a longtime collegiate athletics administrator, and a former Division 2 college football player.

Tom has spoken at over 50 schools in Connecticut about the Power of Social Media, and helping students Make Good Decisions. Most importantly, Tom is the father to three daughters, ages 13, 11 and 8, and deals with issues of children/teens and social media every day. His presentation is geared to helping students and parents Make Good Decisions on Social Media.

This includes being private and not sharing personal information, but also building a healthy and trusting relationship between students and parents. We don't throw cars keys to our children and tell them to drive, we shouldn't do that with technology.

We can all learn together and get on the road to Making Good Decisions. (Tom will give presentations to students grades 5-12 during the school day.)

### ELEMENTARY AFTER SCHOOL CLUB (Grades 2-5)

Every Wednesday 3:30-5:30 pm

Come to the LYSB Etherington Activity Center to hang out with your friends and participate in a variety of fun activities. We'll do arts and crafts projects as well as play basketball, ping pong, Wii, and much more! Snacks and refreshments are provided. Students from Mile Creek and Lyme Schools will take the bus directly to LYSB. Register at [www.lysb.org](http://www.lysb.org).

### MIDDLE SCHOOL AFTERSCHOOL PROGRAM

Tuesdays & Thursdays 2:15-4:00 pm at LYSB

This is a drop in program and a permission slip is required.

Come hang out with your friends while listening to music, playing pool, games, Wii, crafts & snacks. Students may get a pass for the LOLMS late bus. Registration fee: \$30/year. Scholarships available. Register at [www.lysb.org](http://www.lysb.org).

### YAC (Youth Advisory Council)

Meets Wednesdays from 7:00-8:00 pm at LYSB

YAC is a community service organization open to all high school students interested in helping out in their community. Each year, the group participates in a variety of activities including sponsoring dances and events for high schoolers, adopting families for Thanksgiving and Christmas, and many community projects that come our way. YAC also fundraises for the Youth Advisory Council Community Scholarship which is awarded to graduating seniors who have shown a commitment to community service. Not just for LOLHS students, YAC welcomes members from other high schools or home schoolers who live in Lyme and Old Lyme. Join us any Wednesday night at YAC! Please come to our meeting and join the fun. Pre-register at [www.lysb.org](http://www.lysb.org).

### JR. YOUTH ADVISORY COUNCIL

Wednesday, October 18, 2017, 6:00-7:00 pm. Our Middle School community service club will partner with high school students on projects and activities throughout the year. This group will meet on a quarterly basis, or as needed for projects. This program is free, but please register at [www.lysb.org](http://www.lysb.org).

### SITTER SAFETY CLASS

Four Mondays: November 6, 13, 21, 27, 2017, 2:15-4:00 pm

An intense sitter safety course appropriate for babysitters, big brothers and sisters, and children staying home alone for the first time. This course touches on a variety of safety skills such as basic first aid, fire safety, and 911 skills. Fee is \$50 and includes supplies, snacks, and guest speakers. Late Bus passes are available. Register at [www.lysb.org](http://www.lysb.org).

### CPR FOR BABYSITTERS

Monday, December 4, 2017, 2:15-3:45 pm

Add this valuable class to your LYSB babysitter's course and learn how to save a life! Learn CPR and how to clear a blocked airway in children and infants. Parents want to hire babysitters who know CPR and can help kids who are choking. Instructors will teach you everything you need to know to provide lifesaving care during a cardiac or choking emergency in this class. Class cost is \$55 and awards a Certificate of Completion. Register at [www.lysb.org](http://www.lysb.org).

### ENGINEERING AFTER SCHOOL FOR ASPIRING YOUNG ENGINEERS!

SESSION I Ages 5-8: September 14/21/28

October 5/12/19, 2017

SESSION II Ages 9-14: November 2/9/16/30

December 7/14, 2017

Discover the world of engineering through hands-on, minds-on activities! In these exciting, educational programs, students use and apply problem solving and critical thinking skills to explore our S.T.E.A.M. (Science, Technology, Engineering, Architecture, Mathematics) based curriculum. Participants will use a variety of mediums such as recycled materials, salvaged motors and gears, balsa wood, LEGO®, and more. With activities ranging from bridges, to rockets, to green engineering, participants are sure to have a blast while learning fundamental engineering terms and concepts along the way! Students can take the bus from Mile Creek and Lyme Schools directly to LYSB. Fee: \$125/session. Register at [www.lysb.org](http://www.lysb.org).

### SEWING WORKSHOPS!

**Fantastic Fall Sewing** - October 3, 10, 17, 24, 2017, 4:00-6:00 pm.

With arts educator Claudia Mathison

Here's your chance to learn machine and hand sewing skills in a

relaxed and nurturing environment. With fall as our theme, we'll sew and applique a woolen tote bag and matching wallet. Basic sewing, applique and embroidery techniques will be taught. Machines and materials provided. Fee: \$100. For ages 8 and up, no experience necessary. Students can take the bus from Mile Creek or Lyme Schools directly to LYSB. Register at [www.lysb.org](http://www.lysb.org).

**Sewn and Crafty Holiday Gifts** - November 14, 28, December 5, 12, 2017 (note no class on 11/21)  
Let's get ready for holiday gift giving with handmade stockings, scented sachets and beautiful soaps. We'll sew and craft wonderful gifts for the special people in your life. Machine and hand sewing techniques will be taught. Fee: \$100. Ages 8 and up, no experience necessary. Register at [www.lysb.org](http://www.lysb.org).

**MOTHER/DAUGHTER WORKSHOP: Let's Start Talking**  
Thursday, October 26, 2017, 6:00-8:00 pm  
Open the lines of communication with your daughter! Designed to give girls a better understanding of the changes that her body will go through during puberty. Topics will include the importance of a positive body image and how to deal with difficult situations. A fun and educational night out for girls in 4th or 5th grade and their mothers. Cost is \$50 per pair and includes resource materials, goodie bags and a pizza dinner. Register at [www.lysb.org](http://www.lysb.org).

**RUN LIKE A GIRL**  
Saturdays 9:30-11:00 a.m. September through December. A group running program for girls age 8 and up, training for a 5K finale! Meet for a group run on local trails, followed by half hour meeting with lessons that cover topics such as: embracing differences; stretching; nutrition; dealing with injuries; "your look;" team spirit; stress relief; goals and plans. Fee: \$50, Ages 8 and up. Register at [www.lysb.org](http://www.lysb.org).

**CAR SEAT SAFETY TALK**  
Wednesday, September 27, 2017, 10:30 am  
A CT Child Passenger Safety Technician from Connecticut Children's Hospital will be leading this informative discussion. Did you know that only one out of five car seats are installed correctly? Are you familiar with new CT laws on height and weight? If you have questions about recalls, booster seats, forward facing, airbags, and many more than this open forum is for you. Children welcome. This program is free but pre-registration is required at [www.lysb.org](http://www.lysb.org). \*Private car seat safety inspections will be scheduled upon request. Please call 860-434-7208 x 208 for your appointment.

**MONDAY PLAYGROUP for ages 1-ish to 2**  
Mondays 9:30-10:45 am  
continued on page 30




*Serving the CT River Valley Since 1924*  
Heating Oil Dealer #252  
P-203832 / S-303213

**Your Source for BioHeat®  
the "natural heating oil"**

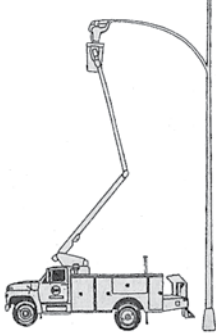
- **WATER SYSTEMS**  
Pumps, Tanks, Heaters, Filters
- **FUEL OILS, PLUMBING AND HEATING**  
High Efficiency Boilers, Solar Hot Water Service and Repairs, Remodeling, Renovations

**860-873-8454**  
[www.mausandson.com](http://www.mausandson.com)



- BUCKET TRUCK SERVICE
- MOTOR CONTROLS
- LANDSCAPE LIGHTING
- TELEPHONE WIRING
- GENERATOR INSTALLATIONS
- SALES & SERVICE
- UNDERGROUND WIRING
- FIRE ALARM SYSTEMS
- LIGHTING CONSULTANT
- TROUBLE SHOOTING
- SOLAR ELECTRIC SYSTEMS

CT LICENSE #103314



**RESIDENTIAL • COMMERCIAL  
MARINE • INDUSTRIAL**

*"BIG ENOUGH TO DO THE JOB,  
SMALL ENOUGH TO CARE"*

**860-434-9726**  
OLD LYME, CT [www.zelekelectric.com](http://www.zelekelectric.com)

## Lymes' Youth Service... continued from page 29

This playgroup for one-ish year olds features 75 minutes of hands on activities, encouraging the exploration of sensory experiences with a variety of unique materials. Leave the mess to us while your child experiments with textures, creative expression, & simple construction, while interacting with other children.

**Session I: Art Projects:** September 11 - October 23, (no group 10/9) six weeks \$48

September 11 - Edible Finger Paint; September 18 - Tabletop or Tummy Time Painting; September 25 - Baby Safe Marble Painting; October 2 - Painting with Feet; October 16 - Handprint Artwork; October 23 - Footprint Artwork

**Session II: Sensory Bins for Little Ones:** - October 30 - December 11, (no group 11/20) six weeks \$48

October 30 - Spaghetti; November 6 - Rice; November 13 - Beans; November 27 - Oats; December 4 - Potato Flakes; December 11 - Pom Poms

### BABIES GROUP

Tuesdays 11:00 am to 12:00 pm

**Session I: Baby Group:** September 12 to October 10, five weeks, free.

For new and expecting moms and parents of children up to 12 months. This group is casual, comfortable, and informative.

Weekly topics of interest are based on the diversity of your own questions and concerns commonly found during the first year of parenting. Meeting in the child friendly atmosphere of Mimi's Place a LYSB. Join anytime.

**Session II: Infant and Baby Massage:** October 17 to October 30, 11:00 am to 12:00 pm, three sessions, \$30 Ages: Newborn to Crawler.

Private appointments also available. Learn to massage your baby with the help of an IAIM Certified Infant Massage Instructor (CIMI). Pressure, rate, rhythm, the length of the massage, respect, and bonding, why babies cry, baby's body language, relaxation, and parent empowerment are some of the skills and topics you will learn. Register at [www.lysb.org](http://www.lysb.org).

### WEDNESDAY PLAYGROUP for ages 2 to 5

Wednesdays 9:20 – 10:45 am. Register at [www.lysb.org](http://www.lysb.org)

**Session I: Parachute Play** -September 13 to October 18, six weeks \$48

Explore a variety of new group activities each week. Learn fun parachute games, make a floating cave, and send balls to the sky. Children will also have free time to enjoy Mimi's Place.

**Session II: Movement** - October 25 to December 6, (no group 11/22) six weeks \$48

Monkey See. Monkey Do. Can you balance, stretch, & run in place too? Walk real fast, then real slow, play some music as you go! A fun way for your child to discover the joy of movement. Children will also have free time to enjoy Mimi's Place.

### THURSDAY MULTI AGE PLAYGROUP

Thursdays, 9:30 to 10:45 am

**Session I: Transportation** - September 14 to October 19, six weeks, \$48

Cars, taxis, airplanes, trains, buses, boats and more! Register at [www.lysb.org](http://www.lysb.org).

**Session II: Fall & Holiday Fun** - October 26 to December 7, (no group 11/23), six weeks \$48

### LYSB HALLOWEEN PARTY

Tuesday, October 31, 5:00-6:15 pm, Costume Parade at 6:30 pm  
Calling all little ghosts and goblins. For ages 0 to 2nd grade, join us at LYSB for some Halloween fun, crafts, games and Music with Margie. Join us at the Old Lyme Firehouse for a costume parade at 6:30 to march down Lyme Street behind a fire truck! Registration is not necessary.

### GINGERBREAD HOUSE FAMILY WORKSHOP

Sunday, December 10, 2017, 12:30-2:30 pm. An LYSB tradition!  
Your family will make your own Gingerbread House to take home. Leave the mess with us! We supply all the ingredients. Bring your camera! \$10/house. Please REGISTER.

## Town of Old Lyme Social Services

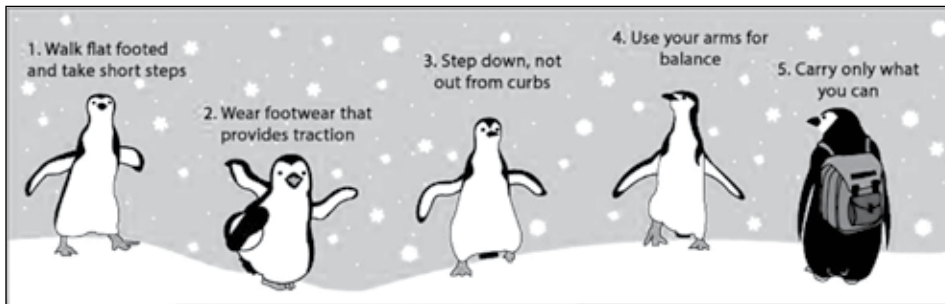
We are currently accepting appointments for the Connecticut Energy Assistance Program, which may help income eligible households in paying for their heating costs during the winter months. Households are determined eligible based on state income and asset guidelines. We are the intake site for residents of Old Lyme. Applications are then processed through TVCCA. You may be eligible for benefits even if heat is included in your rent payment (depending on your income and rent amount.) Apply early in case funds run out.

The social services department has a small food pantry on site. We receive food donations at holiday time, but are in need of some supplemental items. We are particularly looking for hearty canned soup, coffee (decaf and regular), canned/jar fruit & vegetables, canned tomatoes and sauce. There is a marked box in the lobby of the Town Hall for food donations. Thank you very much!

It is the mission of the Town of Old Lyme Department of Social Services to enhance the quality of life and self-sufficiency of people in need of EMERGENCY non-current financial

services. We provide advocacy, planning, resources and deliver these services in partnership with public and private organizations. Services will be provided confidentially, courteously and promptly. No one will be discriminated against due to race, color, natural origin, religion, sex, age, disability or marital status. For more information, or to schedule an appointment, please contact: Jennifer Datum, Social Services Coordinator at: 860-434-1605, ext. 228 or email: [socialservices@oldlyme-ct.gov](mailto:socialservices@oldlyme-ct.gov). Office hours are: Mondays 12 - 4, Wednesdays 9 - 1 and Fridays 9 - 1 or by appointment.





Winter is upon us and with it comes icy conditions that put us at risk for falling. Falls can have devastating consequences especially as we age. Here are some tips to help keep you standing strong this winter!

- Dress warmly and if possible with a bulky coat to help cushion you if you should fall.
- Keep warm but don't cover up to the point that it is difficult to see or hear.
- Wear something bright like a scarf or reflective so drivers can see you walking.
- If you really are afraid of falling, carry a little bag of snow melt or kitty litter to put down as you walk. Just make sure it isn't too heavy as it will affect your balance.
- Wear sunglasses, especially if it is sunny, as the snow's glare can make it hard to see ice.
- Ski poles or canes with an ice pick on the end can help with balance.
- Wear proper footwear with good grip. Do not wear boots or shoes with plastic or leather soles. Ice grippers, such as Yaktrax, that go over footwear can help you walk on hard packed snow and ice. But be careful! Grippers become dangerously slippery and must be removed before walking on smooth surfaces such as stone, tile and ceramic. Before buying the grippers, be sure that

you are able to attach and remove them from your boots, this is best done sitting down.

- Pay attention to where you are walking. Look for iced areas and if possible, walk around them. If you have a choice, walk on the southern side of the path. North-facing spots stay icy longer.
- Take your time! Walk slower so you have time to react if you feel a change in traction.
- Hold onto available railings for balance especially going up and down steps. Plant your feet firmly on each step.
- Keep your feet apart at least a foot for a wide base of support. This helps to keep your balance.
- Bend your knees slightly as you walk if the area is slippery. This will help to keep the center of gravity closer to the ground which helps to stabilize your body.
- Waddle like a penguin! Avoid an erect, marching posture. Keep the center of gravity over your front leg. Make the step small, placing your whole foot down at once. Then shift your weight very slowly to this foot and bring your other foot to meet it the same way.
- When you step on icy areas, take short steps, curl your toes under and walk as flatfooted as possible.
- Keep your hands out of pockets and by

your side to provide balance. Do not carry heavy loads that may cause you to become off balance.

- When walking down a slippery slope, walk sideways, but do not cross one foot over the other. Bend your knees slightly.
- Before you step off the curb, make sure oncoming cars and trucks have come to a complete stop. Due to poor road conditions, motorists may not be able to stop at traffic signals or slow down for pedestrians who have the right of way.
- When getting out of your vehicle, look down at the surface. If it's coated with ice you might want to park in a different place.
- Use special care when entering or exiting vehicles. Use the vehicle for support. Before standing brace yourself with the vehicle door and seat back. This will give you some stability.
- Walking over a slippery floor can be just as dangerous as walking over ice! Keep these tips in mind if you are entering a building:
  - Remove as much snow and water from your boots as you can. Water from melting ice on the floor can lead to slippery conditions.
  - Notice that floors and stairs may be wet and slippery-walk carefully especially by outer doors.

Ledge Light Health District offers free in-home falls prevention assessments. Call Kris Magnussen at 860-448-4882 to schedule an appointment.

<http://www.ehs.wisc.edu/walk-like-a-penguin.htm>



### WHAT IS 2-1-1?

It is Connecticut's free and confidential information and referral service. By calling 2-1-1, a toll-free number throughout CT, callers can reach knowledgeable, multilingual staff and get information, referrals or seek help in a crisis. 2-1-1 operates 24 hours-a-day, every day of the year.

TDD access is available.

Visit the website for more information: <http://www.211.org/#>

# Estuary Council Regional Senior Center

220 Main Street, Old Saybrook  
860-388-1611

All ages welcome! 220 Main St, Old Saybrook. Call 860-388-1611 for details.

**The Estuary Council of Seniors, Inc.** is a community center for the region's residents over 50 years old providing meals, transportation, health services, educational classes, exercise programs, and socialization activities. We have been promoting healthy and active lifestyles through quality programs and services in the nine-town Estuary region for over 40 years. Please visit us at [www.ecsenior.org](http://www.ecsenior.org) for additional information or call us at 860-388-1611.

**ESTUARY SHORELINE CHEFS** - Sunday, September 24, from 3 - 6 pm at Water's Edge in Westbrook. Support Meals on Wheels while enjoying fabulous food provided by over 20 local chefs. There will also be Beer and Wine tastings and music by The Von Zells. You don't want to miss this event! Advance tickets are \$40 pp and \$45 pp at the door. Tickets available online at [www.ecsenior.org](http://www.ecsenior.org) or at 220 Main St, Old Saybrook. Call 860-388-1611 for details.

**ESTUARY HOLIDAY CRAFT FAIR** - Saturday, November 18, from 8 am - 1 pm. Get your holiday shopping started with local artisans! Find that unique perfect gift for loved ones.

**ESTUARY BINGO RETURNS** - Thursdays at 6:30 pm. Doors open at 5:30 pm. Admission, including game package is \$12 per player. Cash prizes!!!! Games will be every Thursday through November 9. All ages welcome. Come join the fun!

**ESTUARY GYM IS SILVER SNEAKERS APPROVED!** If you are a member of a Silver Sneaker participating health plan in CT, the Silver Sneakers plan will pay for your gym visits. Does NOT apply to fitness classes. Check eligibility by contacting the Estuary at 860-388-1611.

**THE MARSHVIEW FITNESS CENTER** - Stay healthy and strong by working out in our gym. Membership Options: \$50 for 3 months, \$90 for 6 months, \$150 for a year. Stop by the Office for a tour and learn how to become a gym member.

**The Estuary Thrift Shop** offers the best bargains on the shoreline! Clothing, furniture housewares, decorations, and jewelry are just a few of the things you will find. Every day is different! All ages are welcome to come in and shop. Open Saturdays! Daily Specials!

## The Old Lyme Visiting Nurse Association, Inc.

In June, Old Lyme - jointly with the OLVNA and Ledge Light Health District - became one of the first towns in Connecticut to conduct a "CPOD" a "Closed Point of Dispensing" exercise. The drill, held at Town Hall, involved town employees and volunteers from the Lymes' Senior Center in an effort to test the speed with which antibiotics could be dispensed in the event of a public health emergency. The results were impressive: for all participants, the process for moving from the greeter station to the dispensing station took less than 5 minutes, and for most of them it was only 90 seconds. Many thanks to First Selectwoman Bonnie Reemsnyder,

Emergency Manager Dave Roberge, and Ledge Light Public Health Emergency Preparedness Coordinator Kris Magnussen for coordinating the exercise and helping make it an excellent educational experience for all of us.

Last spring we awarded scholarships to eight LOL seniors. Anna Mesham, Benjamin Jackson, Alexandra Duddy, Caleigh O'Neil, Julie Golebiewski, and Hannah Guenther received an OLVNA scholarship, while Anna Mesham and Benjamin Jackson received a Mary Hubbard Noyes Memorial scholarship. Each of these graduating seniors plans

to pursue a degree in a health care field. We wish them all the best.

The OLVNA is always seeking people who are interested in joining our organization, as a director or an associate. Please contact Cindi at 860-434-1222 or email her at [oldlymevna@gmail.com](mailto:oldlymevna@gmail.com) if you'd like more information. We meet at Town Hall on the second Monday of each month from September to June.

This year's Flu Clinic and Wellness Fair will be held at the Senior Center on Saturday, October 21. Details are coming soon.

## The Woman's Exchange

The Woman's Exchange of Old Lyme is at 86 Halls Road. We are a non-profit organization. All of our proceeds are donated to local charitable organizations. We have many unique gifts and many delightful handmade items, antiques and a well-equipped baby department. In 2017, donations were given to New London Hospitality Center, Dances with Wood (for children with cancer) and the Thames River Family Program.

Our major fundraiser for 2017 is our Christmas Luncheon which includes a boutique and fashion show at Saybrook Point Inn in Old Saybrook on December 1. Invitations are available at the shop.

Our shop is run entirely by volunteers. Come in! Enjoy! We are open from 10-5 Monday through Saturday.

# Do You Have a Family Emergency Plan?

## Hurricane Season has Arrived

### FAMILY EMERGENCY PLAN

Identify an out-of-town contact. It may be easier to make a long-distance phone call than to call across town, so an out-of-town contact may be in a better position to communicate among separated family members.

Be sure every member of your family knows the phone number and has a cell phone, coins, or a prepaid phone card to call the emergency contact. If you have a cell phone, program that person(s) as "ICE" (In Case of Emergency) in your phone. If you are in an accident, emergency personnel will often check your ICE listings in order to get a hold of someone you know. Make sure to tell your family and friends that you've listed them as emergency contacts

Teach family members how to use text messaging. Text messages can often get around network disruptions when a phone call might not be able to get through.

Assemble a First Aid Kit, and include a complete list of prescription meds for each family member. You'll need food & water for 3-4 days: make a list of what you'll want to pack! Include local and state road maps to aid in an evacuation, a

battery-powered or hand crank radio with extra batteries, a good flashlight and extra batteries (check back to school sales for good prices).

Register your cell phone, work number, or other phone numbers for automated phone messaging during an emergency. You can choose to be notified by e-mail, phone or text message.

### DON'T WAIT FOR A POWER OUTAGE:

#### Register for Old Lyme Alerts today!

The Town of Old Lyme has launched Old Lyme Alerts, an Emergency Notification System. Residents and business owners can register with their preferred contact information in order to automatically receive messages from the Town about emergency or urgent situations. We can let you know if a health crisis poses a threat; if a fire or accident will restrict access to neighborhoods; and, of course, if our community needs to prepare for another impending hurricane or winter storm. The contact information you provide is protected. It will not be used for any other purpose. Even if you have already registered for notifications through the state system (ctalert.gov), you will want to register for local Old Lyme Alerts. Visit [www.oldlyme-ct.gov](http://www.oldlyme-ct.gov) and follow the link.

**REGISTER ONLINE TODAY (visit [www.oldlyme-ct.gov](http://www.oldlyme-ct.gov) and follow the link)**

**OR COMPLETE THE FORM BELOW.**

**Mail it or drop it off at the Town Hall, the Lymes' Senior Center, or the OLPGN Library.**

Please print clearly below:

Name: \_\_\_\_\_ Old Lyme Street address: \_\_\_\_\_

Mailing Address: \_\_\_\_\_

### How would you prefer to be contacted by the Town?

Please indicate your preference below, entering 1 for the best way to contact you, 2 for the second best way, etc.

Enter 1,2, etc.:	Please print clearly below:
_____ cell phone texts	_____
_____ cell phone calls	_____
_____ home phone	_____
_____ work phone	_____
_____ other phone	_____
_____ personal e-mail	_____
_____ work e-mail	_____
_____ other e-mail	_____
_____ TTY device	_____

### Are you interested in receiving e-mail messages about community and town events?

Please circle:    Yes    No    Provide your e-mail address: \_\_\_\_\_

*We Can't Contact You if We Can't Reach You*



# LAYSVILLE

## HARDWARE

### A Complete Line of Hardware & Paint Supplies

Power Tools • Diesel • Lawn & Garden Supplies

Gas Grills • Electrical & Plumbing Supplies

Builder's Hardware • Blades Sharpened

Glass Cut & Window Repairs

Rentals: Power Washers • Paint Sprayers • Rug Shampooers

**860.434.7727**

171 Boston Post Rd, Old Lyme

Sign up for savings  
with our E-Newsletter



[laysvillehardware.com](http://laysvillehardware.com)



## Advice for Executors

### The Top 5 Things to Do the First Week After Someone Passes Away

1. Monitor the home. Keep an eye on the decedent's home, answer phone messages, collect mail, discard food, and water plants. If necessary, change the locks. Don't give away any personal property in this first week.
2. Arrange for burial or cremation. Search the decedent's papers to determine whether they have a prepaid funeral contract or burial plan. Decide how you will pay for the funeral and memorial service. Unless the decedent made you the joint owner of a bank account, you and close family will need to front these costs and get reimbursed from the estate.
3. Prepare the funeral service. In some religious faiths, the funeral service occurs soon after death. Find any directions from the decedent in this regard. Visit with the clergy member to review the service. Prepare remembrances and gather photos for the wake and the funeral reception. Contact the restaurant or other venue at which you want to hold the reception. If appropriate, write a eulogy or delegate this task to someone.
4. Prepare an obituary. It will mean a lot to the family if you take the time to prepare an obituary well. Send the obituary to the local newspaper.
5. Gather Important Documents. Get at least 10 original death certificates. The funeral home will usually order these certificates for you. Find the Will, any Trust Agreement, the latest bank account statements, investment statements, deeds, birth certificate, marriage certificate, divorce decree (if any), Social Security information, life insurance policies, certificates of title to vehicles and keys to the safe deposit box or home safe.

Joseph Cipparone & Jack Reardon  
Cipparone & Zaccaro, PC

## Time to Rebalance?

The stock market has experienced steady growth for several months. Whether it has reached a peak will only be known in retrospect. If you are investing for the long term the timing of market peaks and troughs is not critical to your overall success. But now may be the time to review your investment accounts.

In general the asset allocation of a portfolio is designed to balance the combined risk and return needs of the investor. If you've determined that your proper balance of risk and return would be best accomplished with a portfolio of investment assets that is 60% in equity (stocks) and 40% in fixed income (bonds), it is quite likely that your portfolio is currently more than slightly out of balance. After the past year of steady stock market growth, it would not be surprising, to see such a

Good hearing is

**PRICELESS**



Is it time to get your  
hearing checked?

 **County Hearing and Balance**

**OLD SAYBROOK**  
900 Boston Post Road  
**860-388-0022**

**WATERFORD**  
Lowe's Plaza  
167 Parkway North  
**860-443-6944**

Call us for a Free Initial Consultation  
All services by Doctors of Audiology  
[www.countyhearingandbalance.com](http://www.countyhearingandbalance.com)

portfolio now holding 65% or even 70% equity. This increased allocation to stock, while the result of positive economic growth, may also add unnecessary risk to the portfolio.

To counter that increased risk, rebalancing may be the solution. Rebalancing entails selling certain assets - in this case a portion of the riskier equities - and using those proceeds to buy other assets - in this case the more stable fixed income. Selling a stock or mutual fund at a high point can seem counterintuitive and difficult but the practice can allow investors to capture gains, while also trimming back on riskier assets to maintain the portfolio's intended risk profile.

Jean Wilczynski, CFP®, and Tom McGuigan, CFP®, Exencial Wealth Advisors

## Old Lyme Conservation Commission

SEPTEMBER DESIGNATED AS THE MONTH TO TEST  
YOUR WELL WATER

Old Lyme relies upon wells for pure drinking water, a priceless asset that requires attention and care to protect from contamination from debris, lawn chemicals, or rodents.

To do that, follow the advice from the State of Connecticut Public Health which has designated September as the month for well owners to test their water to maintain purity.

1. **Pick up a free water** test bottles on the second floor of Old Lyme Town Hall.
2. **Take your water sample** to a certified lab for testing: [http://www.ct.gov/dph/lib/dph/environmental\\_health/environmental\\_laboratories/pdf/InstateLaboratoriesCertifiedtoTest\\_DrinkingWater.pdf](http://www.ct.gov/dph/lib/dph/environmental_health/environmental_laboratories/pdf/InstateLaboratoriesCertifiedtoTest_DrinkingWater.pdf). A convenient lab is Eastern Analytical Lab in Old Saybrook, 860-388-2378.
3. **Share a copy of your results** with Town health authorities to keep Town records current.

The Old Lyme Conservation Commission especially urges shallow well owners around Rogers Lake to test their well water. Owners of shallow wells must take extra care in applying heavy doses of nitrogen-loaded fertilizers on their lawns. Plus, a relatively new State law limits using fertilizers containing phosphorous near water bodies because even very small amounts of phosphorous compounds foster weed growth in our lakes and streams.

The CT Department of Public Health Publication Number 24: Private Well Testing provides answers to What to Test For? How Frequently to Test? When and Why to Test? [http://www.ct.gov/dph/lib/dph/environmental\\_health/eoha/pdf/24\\_residential\\_drinking\\_water\\_well\\_testing.pdf](http://www.ct.gov/dph/lib/dph/environmental_health/eoha/pdf/24_residential_drinking_water_well_testing.pdf).

We all know that pure drinking water is basic to good health. It's a good time to test your water.

**Want to Reach Every Home  
& Business in Town?  
Call Betty Martelle at 860-333-7117**




**Schedule Your fall Tune Up & Installation Of Your New Propane fireplace**

24/7 Emergency Service  
Automatic Fuel Delivery  
Furnace/Boiler Service  
& Installation  
Kohler Generator Service  
& Installation  
Gas Fireplaces  
Water Heaters  
Price Programs  
Service Plans  
AC Service & Installation

35 William F. Palmer Rd., Moodus, CT 06469  
860-873-3876 / 888-388-2497  
[www.dutchoil.com](http://www.dutchoil.com)

*Celebrating our...  
20th Anniversary  
Serving you since 1997!*

HOD #310 & HOD #909 CT Contractor Lic. #51-303161



60 PLAINS RD, ESSEX, CT 06426  
860.767.8072



- Custom Homes
- Additions
- Full Remodeling Services
- Window Replacement
- Custom Millwork
- Storm Shutters

Fully Insured  
New Home Lic. #170  
Remodeling Lic. #523107  
[www.bogaertconstruction.com](http://www.bogaertconstruction.com)

# The Misunderstood Red Wine “Merlot”

When people think of red wine, one of the most commonly known varieties is Merlot. This variety is misunderstood and sometimes overlooked, due to the growing popularity in big red blends. Merlot is keeping up with the times in creating bold vibrant wines that really leave you asking for another glass!

Some of the most coveted wines in the world are made from Merlot, most notably French Bordeaux's from Pomerol and Saint Émilion. These wines are full of flavor yet are very dry in the finish. The most famous Bordeaux from Pomerol is Château Pétrus, which nowadays is priced around \$2,000.00 per bottle.

Italian Merlot is much like Merlot from Saint Emillion in France - soft, dense and drier in the finish than California. They do a lot of blending of Merlot in Tuscany with Sangiovese and Cabernet. Massetto from the Ornellaia Vineyards in Bolgheri is Italy's most famous Merlot wines.

In the mid 90s Merlot became very popular in California. It brought more red wine drinkers into the market with its light style, fruity flavors, and soft finish. The popularity became so big that the planting doubled and production increased. Many of these mass-produced Merlots were flabby and thin in the \$8-\$10 a bottle range and hurt the

Merlot business. Then with the release of the acclaimed film “Sideways” in 2004 the Merlot grape was snubbed and Pinot Noir made its rich debut into the American market. Merlot sales decreased by 15% in the US and Merlot slowly became ‘the forgotten’ grape.

In the past few years however, Merlot has really started taking off again. With the vineyards concentrating more on the quality of the grapes these Merlots are rich and flavorful, still with a light mouth feel, but with depth. Some vineyards have Merlots that are richer and more dense than the Cabernet Sauvignon that they grow. Washington State, for example produces some excellent Merlot that is full of flavor, and still holds true to the classic dry Merlot finish.

Whether it's been weeks, months, or years, you owe it to yourself to go out and grab a bottle of Merlot. If you prefer a classic drier style, look into beautiful Bordeaux. Or if it is a fruiter, more layered Merlot you are in search of, check out the California and Washington Merlots. These wines can pair with almost any meal you could think of, so they will not fail you when entertaining guests. Cheers!

Art LiPuma  
General Manager,  
SeaSide Wine & Spirits

# Middlesex Hospital to Expand Cancer Services

Getting the best possible care close to home is essential for people fighting cancer. Middlesex Hospital recognizes this and is expanding the cancer services it currently offers.

This fall, a new, state-of-the-art Cancer Center will open at the Shoreline Medical Center in Westbrook. Medical oncology, infusion, radiation therapy and all the extra services that are available in Middletown will also be available in Westbrook. The difference: the new center will mean easier access to care for patients who live in Connecticut shoreline towns. Cancer treatments can sometimes make patients tired or nauseous, and it can be difficult for them to travel. The center will make their lives, and

those who support them, a little easier.

Middlesex Hospital is known for its expert and dedicated staff. Highly skilled medical professionals treat patients like people - not numbers. They focus on providing a compassionate, personalized treatment experience, and specially trained advance practice nurse navigators guide patients through the treatment and rehabilitation process. This is the same high-quality care that patients will receive at the new cancer center in Westbrook.

Additionally, Middlesex Hospital is a member of the Mayo Clinic Care Network. Middlesex Hospital has been

collaborating with the Mayo Clinic for more than a year and is using its resources to tackle patients' most complicated medical cases in a variety of areas, such as cancer care, pulmonary medicine and urology, among others.

Like the Cancer Center in Middletown, the center in Westbrook will use the latest technology to diagnose and treat patients and will be accredited by leading organizations, including the American College of Surgeons Commission on Cancer and the National Accreditation Program for Breast Centers.

For more information, visit [www.middlesexhospital.org](http://www.middlesexhospital.org), or call 860-358-2000.

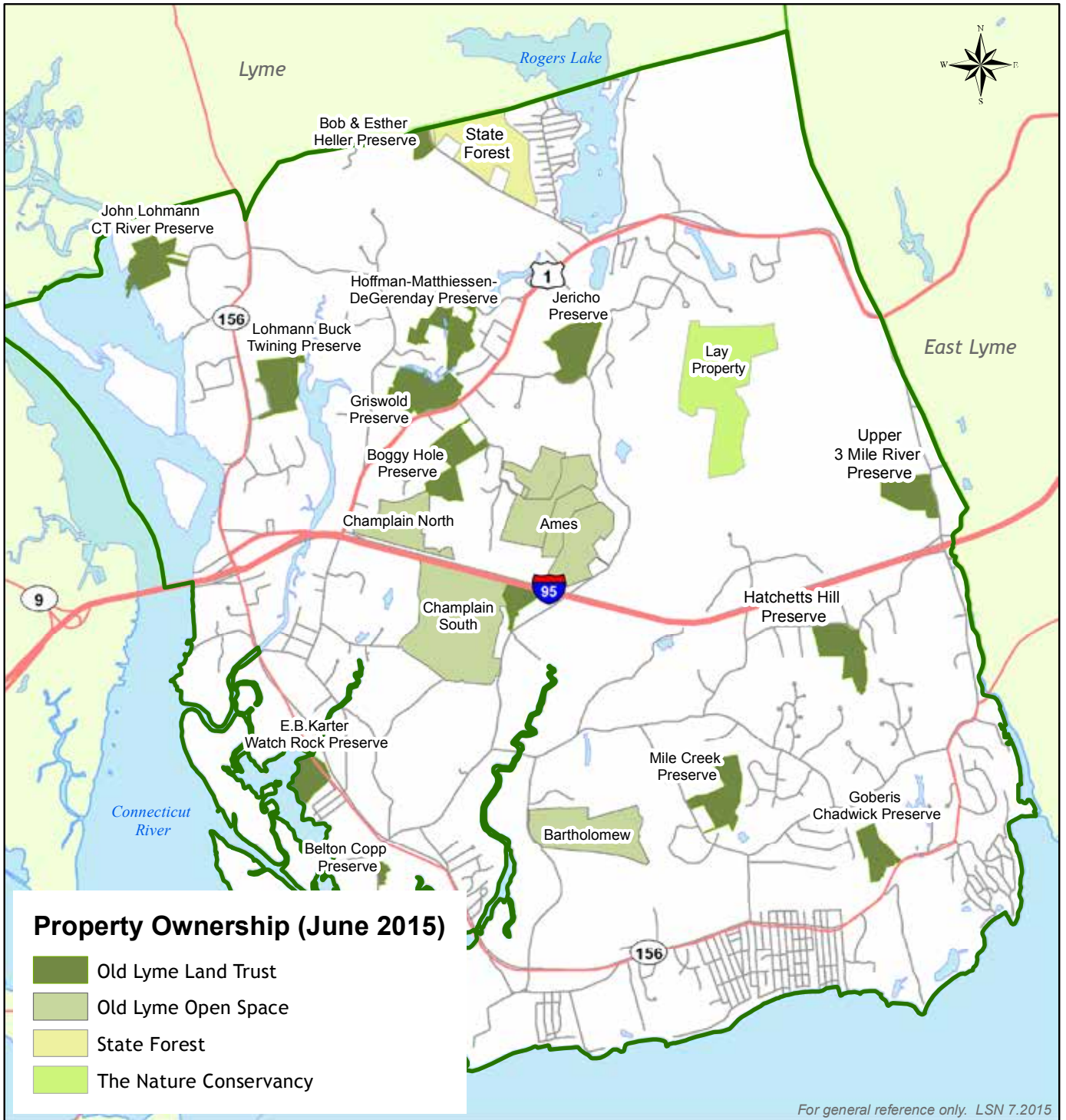




# Old Lyme Hiking Trails



Town of Old Lyme Open Space & Old Lyme Land Trust Preserves



For more information and maps of specific properties please visit:  
[www.oldlymelandtrust.org](http://www.oldlymelandtrust.org) or  
[www.oldlyme-ct.gov/Pages/OldLymeCT\\_BComm/open\\_space](http://www.oldlyme-ct.gov/Pages/OldLymeCT_BComm/open_space)

**FREE**  
**FOR ALL AGES**  
*Autumn Arts Festival*

**SAT, OCT 7 \* 9:30-5PM**  
**SUN, OCT 8 \* 12-5PM**  
**MADISON TOWN GREEN**  
**MADISON, CT**

~ ADDITIONAL EVENT ~

**Group Gallery Exhibit**  
 September 22 - November 5  
 Reception Friday, September 22 (6:30-9pm)

**Spectrum | Gallery**  
 (860) 767-0742  
 61 Main St. Centerbrook, CT  
 Register for Art Classes and Workshops  
 Shop Online at Spectrum Anytime  
[www.spectrumartgallery.org](http://www.spectrumartgallery.org)

## Faerieville USA

The Florence Griswold Museum presents Faerieville USA: In and Around a Wee Faerie Town on the grounds of museum's campus from September 30 to October 29. Visitors follow their map of Faerieville to thirty-one hand-crafted faerie scenes. There's everything faeries need to live, work, and play. Visitors will stroll along Wee Faerie Boulevard and marvel at the quintessential small-town features such as the wee faerie bakery, library, and flower shop. This annual event has come to signify an enriching, not-to-be-missed outing for visitors of all ages. This year's Wee Faerie Village is the ninth of the Museum's annual outdoor creative installations. Check out [www.FlorenceGriswoldMuseum.org](http://www.FlorenceGriswoldMuseum.org) for a complete list of special events and activities scheduled in connection with Wee Faerie Village.



**salonpure**  
[www.SalonPureCT.com](http://www.SalonPureCT.com)

**Time for a NEW Look & Style!**  
 Schedule an appointment today

LIEUTENANT RIVER CTR.  
 11 HALLS ROAD  
 OLD LYME, CT 06371  
**860-598-9032**  
[SALONPURECT@GMAIL.COM](mailto:SALONPURECT@GMAIL.COM)

Salon Hours: Tue 9 - 7 | Wed 9 - 8:30 | Thu 9 - 8:30 | Fri 9 - 6 | Sat 8 - 1

**Children's Dental Associates**  
 OF NEW LONDON COUNTY

The American Academy of Pediatric Dentistry recommends children be seen by a Pediatric Dentist by the First Tooth or First Birthday!

**Establish your child's dental home now and call us for an appointment!**

131 Boston Post Road • East Lyme  
**860.691.5014**  
*"Creating happy healthy smiles one child at a time."*

[www.ChildrensDentalNLC.com](http://www.ChildrensDentalNLC.com)



# Chrysoulakis Family of Old Lyme Recognized as the Fund A Cure Family at 2017 JDRF Promise Ball



Juvenile Diabetes Research Foundation (JDRF) is pleased to announce the Chrysoulakis family of Old Lyme is this year's Fund A Cure Family at JDRF's 2017 Promise Ball. The annual gala, hosted by the Greater CT / Western MA Chapter of JDRF, was held at the Connecticut Convention Center in Hartford on May 20, 2017 to raise funds for type 1 diabetes (T1D) research.

When Alex Chrysoulakis was 8 years old, his parents Angelo and Maureen noticed that he was drinking an excessive amount of water and took him to his doctor. They received news no parent wants to hear: "your son has type one diabetes." What followed that moment was the realization that T1D doesn't quit. There is never a break from constant finger pricks, calculations, shots, tears, fears and frustration. Every day, his parents say, Alex must carefully plan everything he does. Playing with friends, being outside in the cold, enjoying an "intense" video game, or watching a scary movie, can all have a drastic effect on his blood sugar level. Alex's responses to this disease have been nothing less than amazing. In the last 4 years, he has worked tirelessly to raise thousands of dollars for T1D research through his One Walk team Alex's Avengers and continues to volunteer as a JDRF youth ambassador. The Chrysoulakis family is committed to finding a cure for T1D and JDRF is proud to have them as their 2017 Fund A Cure Family.

Proceeds from the annual Promise Ball will go towards research and treatments of type 1 diabetes. Last year's gala event raised more than \$1.1M for the Greater CT/Western MA Chapter.



**Old Lyme | \$749,000**  
Under Deposit



**Old Lyme | \$1,198,000**  
Under Contract in 8 Days



**Old Saybrook | \$625,000**  
Listed and Sold  
MULTIPLE OFFERS

**TWO AGENTS ONE GOAL**

**MJ DeRiso**  
860.304.8020  
mjderisio@wpsir.com  
Silver  
Award Winner

**Roger Parkman**  
203.676.1061  
rparkman@wpsir.com  
Gold  
Award Winner





**Hadlyme | \$489,000**  
Listed and Closed in 56 Days



**Lyme | \$588,000**  
Listed and Closed in 43 Days

OLD LYME BROKERAGE | 103 HALLS ROAD | 860.434.2400  
Each Office is Independently Owned and Operated.

ESSEX BROKERAGE | 13 MAIN STREET | 860.767.7488  
Equal Housing Opportunity.



# Child & Family Agency Welcomes New Members



Beautifully manicured grounds (above) and carefully planted container gardens accent a Victorian garden on the Lyme/Old Lyme Garden Tour.



A lush "secret garden" (above) revives a space that was formerly a parking lot.

Child & Family Agency  
Lyme/Old Lyme Auxiliary  
P.O. Box 324 Old Lyme, CT 06371  
www.childandfamilyagency.org  
cfa.lolauxiliary@gmail.com

Old Lyme Village was buzzing with activity last June, when Child & Family Agency's 14th Lyme/Old Lyme Garden Tour brought gardeners and garden lovers



A pair of frogs adds whimsy to a backyard oasis on the 2017 Lyme/Old Lyme Garden Tour.

to town. Visitors wandered up and down Lyme Street and environs, peeking into six spectacular gardens and enjoying the sights and scents of summer on the shoreline. The Lyme/Old Lyme Auxiliary of Child & Family Agency is extremely grateful to all who supported this event, and especially to those who scoffed at the rainy weather and made the tour in boots and raincoats! Look for the next Lyme/Old Lyme Garden Tour in 2019!

The CFA-LOL Auxiliary looks forward to the holiday season, when we will again participate in the Agency-wide Polar Express program (members purchase, wrap, and deliver gifts and food for client families) and host our popular Cookie Walk (homemade holiday cookies, sold by the pound) at Old Lyme's Holiday festival in December.

Proceeds from Auxiliary events like the Lyme/Old Lyme Garden Tour and the Cookie Walk benefit the many services and



William  
Pitt

Sotheby's  
INTERNATIONAL REALTY



**Old Lyme:** LOCATION, LOCATION, LOCATION! Direct waterfront, four bedroom Cottage in private section of White Sand Beach. Walk out your front door to a large deck and very large sandy beach. Offered at \$759,000



**Old Lyme:** GREAT WATER VIEWS! Three bedroom, one and one half bath Cottage with wonderful water views and only steps to the private White Sands Beach association. Youth summer recreation program. Offered at \$499,000



**Old Lyme:** Furnished and beautifully maintained four bedroom, two bath Cottage in the heart of White Sand Beach. Steps to the sandy beach or recreation field, basketball, tennis and community club house. Offered at \$469,000



**Old Lyme:** Four bedroom, one and one half bath Cottage in the heart of White Sand Beach. Good sized yard for outdoor living and barbecuing. Needs a little TLC but very liveable. Offered at \$429,000

## Selling The Shoreline

joekelly.williampitt.com

ESSEX BROKERAGE | 13 MAIN STREET | 860.767.7488  
OLD LYME BROKERAGE | 103 HALLS ROAD | 860.434.2400

Each Office is Independently Owned and Operated.

Joe Kelly  
860.287.1222  
jkelly@wpsir.com



capital projects of Child & Family Agency of Southeastern Connecticut, a private, nonprofit organization dedicated to the well-being and development of all children and their families. Financial donations are welcome in support of any of the Agency programs and events. Visit [www.childandfamilyagency.com](http://www.childandfamilyagency.com) to learn how you can help.

The work of Child & Family Agency's auxiliaries has never been more important than it is today, when state budget cuts jeopardize the future of some Agency services. Auxiliary events such as the Lyme/Old Lyme Garden Tour provide the Agency with unrestricted funds that can fill in where other funding sources fall short. Join us! The Lyme/Old Lyme Auxiliary always welcomes new members. Share your time and talents as your schedule allows. Watch for notices about our fall membership meeting, or email [cfa.lolauxiliary@gmail.com](mailto:cfa.lolauxiliary@gmail.com) to get on our mailing list.

## Old Lyme Circa 1952

We recently discovered Chamber of Commerce directories from 1952, 1958, and 1962 in the Town Hall.

The Chamber of Commerce in those days was called "The Business Men's Association of the Town of Old Lyme." The cover illustration on the 1952 "First Edition" is credited to the late Platt Hubbard. While some advertisements in the directory include familiar names, others offer a glimpse of Old Lyme 60+ years ago. Here are some examples:

- In 1952, Jarvis Brooks, Inc. advertised "Flowers for All Occasions," stating that it had already been servicing Old Lyme for over 40 years from its greenhouses on the Post Road in Westbrook.
- Jack & Red Bailey sold Lee & Dunlop tires from their Black Hall Garage, and Saunders Garage was an authorized Pontiac dealer.
- The A&P Super Market on Lyme Street's headline was "You Can't Make a Mistake on any purchase you make at A&P! This is more than a promise - it's a guarantee...."
- The Bee and Thistle Inn offered attractive rooms with baths for \$3 to \$5 per person, along with dinners from \$1.50.
- 100 Acres Restaurant on the Shore Road featured "Double Lobster Dinners" and a new cocktail lounge.
- Walter S. Dean operated a Trucking and Taxi Service
- Local realtors included Tooker & Sheffield, Jas. Jay Smith Co., Max R. Marston, and Archibald K. Coles.

We'll give you some highlights from the Second Edition - 1958 - in the next issue of Old Lyme Events!



[www.sullivanpaving.com](http://www.sullivanpaving.com)



Services we offer:

- Asphalt Paving & Patching
- Seal Coating & Crack Filling
- Oil and Stone Chip
- StreetPrint® (stamped asphalt)
- Excavation
- Grading
- Drainage

**CALL FOR YOUR FREE ESTIMATE TODAY!**

**860-767-2357**

Family-owned and operated, serving the Southeastern and Southern River Valley regions of Connecticut for over 50 years!

FULLY INSURED AND BONDED. CT LICENSE # HIC 0542208



# Family Friendly Enjoyment at Harvest Fun Day



Local musicians put the "fun" in Harvest Fun Day!



"Frog Jump" is one of the most popular games at Harvest Fun Day.

Looking for a fun way for the whole family to spend a Saturday in September? Head to Harvest Fun Day at Christ the King Church, this year on Saturday, September 16 from 8:30 am to 3:00 pm.



You never know what you'll find in the King's Rummage Sale!

Start your day browsing the King's Rummage Sale. You'll find housewares and kitchen items, books and CDs, holiday decorations, jewelry, bicycles and exercise equipment, furniture, rugs, artwork, toys, and more! Let the kids entertain themselves at the Games and Crafts: Soccer Kick, Hockey Shot, Bowling, Paint-a-Pumpkin, face painting, and more, while you bid on some creative

themed gift baskets at the Silent Auction. Last year's musical entertainment from local musicians was a big hit, and we hope to have a similar line-up this year. You can enjoy while you have lunch or snacks prepared by the Men's Club. Then pick out a tasty treat for later at the Bake Sale! But don't go home without stopping by the Fall Plants & Produce stand on your way out to choose some mums or ornamentals for your front porch.

Harvest Fun Day takes place at Christ the King Church, 1 McCurdy Road, Old Lyme, on Saturday September 16, 2017 from 8:30 am to 3 pm. The Rummage Sale, Bake Sale, and Plant Sale will continue after the Masses Sunday morning (September 17) from 9 am to 12 noon (with steep discounts on Rummage Sale items, while supplies last!). Visit [www.christthekingchurch.net](http://www.christthekingchurch.net) for directions. For more information, call 860-434-1669.

## A Fun Filled Family Festival!

### Saturday, September 30, 2017

*(Rain date Sunday, Oct. 1<sup>st</sup>)*

### 10 AM to 4 PM

### Chester Fairgrounds, Chester CT

- \* Hundreds of Antique and Unique Cars
- \* Live Performances by CT's top Blues Bands
- \* Food Court with a variety of Up-Scale Food Trucks
- \* Locally Brewed Craft Beer On Tap
- \* Market Place of Vendors
- \* Kid's Play Area \* Trophies, Games, Prizes & Surprises

All proceeds benefit

Presenting Sponsor

Additional Support Provided by

For additional information and registration visit [atriskboysfund.org](http://atriskboysfund.org)

# YOU KNOW WHAT CONTROLS PESTS? SCIENCE.

We're Bartlett Tree Experts, a 100+ year old tree and shrub care company with global reach and local roots. With science-based solutions and expert service we protect your property from threats like:

- Damaging Insects
- Tree & Shrub Diseases
- Deer & Ticks
- Root Problems

FOR THE LIFE OF YOUR TREES.

Call 860.767.1752 or visit [BARTLETT.COM](http://BARTLETT.COM)



# 2017 Vista Tour de Shore SUNDAY, OCTOBER 15



Westbrook Elks Lodge, Westbrook, CT

Register at: [www.vistatourdesore.com](http://www.vistatourdesore.com)

For more information  
call 860-399-8080





**Don't Know What To  
Do Next? We Do**  
FIRE, WATER AND MOLD RESTORATION



- CARPETS, AREA RUGS ,UPHOLSTERY
- COMPLETE PROJECT CLEANING  
RESIDENTIAL AND COMMERCIAL
- SERVING THE SHORELINE FOR 28 YEARS

**YOU CAN COUNT ON US**  
24/7... 365 DAYS

**Service Master of Old Saybrook,  
Middletown and Guilford**

**860-388-0440**

[smofoldsaybrook-middletown-guilford.com](http://smofoldsaybrook-middletown-guilford.com)

## LAA Lyme Art Association

**ON VIEW: SEPTEMBER 1 TO NOVEMBER 3**

New England Landscape Exhibition, American Society of Marine Artists Invitational & Society of Connecticut Sculptors. Lyme Art Association member artists and select invited artists will be exhibited in this annual exhibition of landscape paintings from around New England. Concurrently, in our Goodman Gallery, the American Society of Marine Artists will feature a show and sale of select works. Sculpture by the Society of Connecticut Sculptors will also be on display throughout the gallery. Opening Reception on Friday, September 8, 5-7 pm. Gallery hours are Wednesday through Sunday, 10-5 pm, and by appointment. Admission is free but a \$5 donation is suggested. Lyme Art Association, 90 Lyme Street, Old Lyme 860-434-7802; [lymeartassociation.org](http://lymeartassociation.org).

**ON VIEW: NOVEMBER 10 TO JANUARY 5, 2018**

**Deck the Walls and Work by Newly Elected Artists**

The Lyme Art Association's annual member show and sale featuring more than 200 works of art in all themes, sizes and mediums, well priced for holiday gift giving. Works by newly Elected Artists will be on view in the Goodman Gallery. Opening Reception on Sunday, November 19, 2 - 4 pm. Gallery hours are Wednesday through Sunday, 10-5 pm, and by appointment. Admission is free but a \$5 donation is suggested. Lyme Art Association, 90 Lyme Street, Old Lyme 860-434-7802; [lymeartassociation.org](http://lymeartassociation.org).



It's time to connect you with the best talent in the CT area.

Whether you're recruiting for direct hire, looking to fill contract staffing positions, or need resume screening help, A.R. Mazzotta is here to deliver the results. Here is how we have become the most trusted and successful employment agency in CT.

- We get to know you. We take the time to personally understand your business.
- We get to know our talent. We interview candidates using behavioral-based methods, evaluate skills and perform reference checks.

Over 5 decades of excellent service proves how much we care.  
Contact us today [www.armazzotta.com](http://www.armazzotta.com)



Recruiting | Staffing | Payrolling

Middletown 860.347.1626  
Wallingford 203.949.4242  
Watertown 860.417.6900  
Westbrook 860.399.9995

[www.armazzotta.com](http://www.armazzotta.com)



Above four paintings, clockwise:  
 Barbara Lussier, Follow the Light, oil, 30x40;  
 Morgan Samuel Price Vincent, oil, 16x20;  
 Jennifer Holmes, Fisherman's Yardscape, oil, 9x12;  
 Thomas Adkins, Below Zero, oil, 30x40;  
 and to the left,  
 Kim Shaklee, Your Pad or Mine, Bronze.

Give a freshly-crafted  
**birthday gift**

Save  
**\$5.00\***  
 with this coupon  
 ELEV0617  
 10/30/17

Birthday Wish (TM) with  
 Caramelized Pecan Bonbons  
 & Triple Birthday Cookies  
 Belgian Chocolate Puff

Party Perfect  
 Birthday Cookies

**edible**  
 arrangements  
 800.555.2297

243 State Street / New London, CT / 860-437-3166  
 240 Post Road / Westerly, RI / 401-322-8800

\*Offer expires 9/30/16. Cannot be combined with any other offer. Restrictions may apply. See store for details. Edible®, Edible Arrangements®, the Fruit Basket Logo, and other marks mentioned herein are registered trademarks of Edible Arrangements, LLC. © 2016 Edible Arrangements, LLC. All rights reserved.

## Set The Tone For A Beautiful Home This Fall



1275 Boston Post Road  
 Westbrook, CT  
**860.399.6161**  
[www.westbrookfloor.com](http://www.westbrookfloor.com)

**WESTBROOK**  
**FLOOR COVERING**

Tues - Fri: 9am - 5pm  
 Sat: 10am-4pm  
 Closed Sun & Mon

Evening Appointments Available



# Florence Griswold Museum Receives Landscaping Grant

**\$1 MILLION GRANT FROM THE ROBERT F. SCHUMANN FOUNDATION**

**Grant Sparks Implementation of Landscape Plan for the Florence Griswold Museum.**

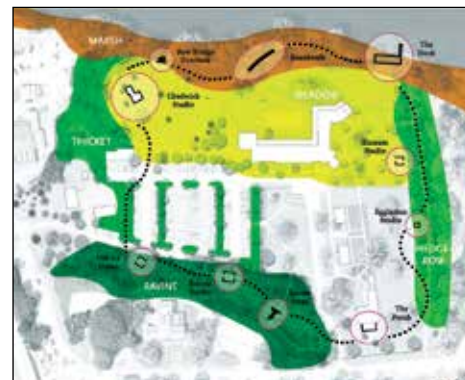
The Florence Griswold Museum in Old Lyme, Connecticut, was recently awarded a \$1 million grant from the Robert F. Schumann Foundation. The grant will allow the Museum to implement a transformative landscape master plan designed to completely re-envision how the historic landscape is interpreted by providing visitors with a more authentic sense of the Lyme Art Colony painters' interaction with the land and the site's agrarian past. Robert Schumann was a devoted trustee and patron of the Museum for nearly two decades. Museum staff seeks to honor Schumann's legacy as an avid naturalist and philanthropist by dedicating a major component of the project in his honor.

The Museum stands at a pivotal moment in its history. Concurrent with years of visitation growth has been the enlargement of the historic site's footprint, which culminated in 2016 with the Museum's acquisition of the last remaining private parcel of Miss Florence's original estate. It was a long-held goal to fully reunite the historic property that had been sold prior to her death in 1937 and then subsequently subdivided. The land acquisition and Schumann's gift provide the Museum opportunity to restore the cultural authenticity of Miss Florence's estate.

The fully integrated master plan weds architecture and landscape in inspiring new ways and recaptures the estate's original DNA by merging art, history, and ecology. With a goal of providing visitors a more authentic sense of why artists were drawn to the site and how they interacted with the land, the Landscape Master Plan re-envision the entire 13-acre site by reclaiming its agrarian past of hedgerows, cart paths, riverfront meadows, and woodland thickets, which were lost over years of subdivision and development. Lyme Art



Stephen Stimson Landscape Architects of Cambridge, MA created a plan for the Florence Griswold Museum that recaptures the site's original DNA by merging art, history, and ecology.



The proposed Artists' Trail, designed by Stephen Stimson Landscape Architects of Cambridge, MA, will guide visitors around the Florence Griswold Museum's property, where a generation of painters created an art colony that would become the nation's center of American Impressionism.



Jeff Andersen, Director, Florence Griswold Museum; R. Ford Schumann Jr. and David D. Schumann, sons of the late Robert F. Schumann; Janie Stanley, Development Director, Florence Griswold Museum; Timothy W. Crowley, attorney for the Robert F. Schumann Foundation; and Ted Gaffney, Facilities Manager, Florence Griswold Museum on the site of the what is to become the Robert F. Schumann Artists' Trail.

Colony painters often worked within the estate's edges, riverfront, brambles, and forgotten corners. This plan activates these edges to tell the artists' story and provide ecological improvements, while directing a cohesive exploration of the grounds. Through the creation of a half-mile long Artists' Trail around the edges of the Museum, visitors will be immersed in a culturally interpretive exploration of the grounds, learning about the site's history and its restored and enriched ecology at various interpretive stations.

To ensure that the plan has only positive environmental consequences, an Ecological Impact Assessment was prepared and concluded that the plan, "strives for balance between cultural and ecological interpretation of the Museum landscape while enhancing, diversifying, and restoring the native landscape." The Museum has worked closely with Audubon Connecticut

Executive Director Stewart J. Hudson, whose organization reviewed the project in detail.

With the completion of the Master Plan and recent grant from the Schumann Foundation, the project will now undergo a series of design phases beginning in August of 2017 to study the implementation of the Landscape Master Plan components. Plans generated from the design process will be subject to town and state regulatory approvals before construction commences, possibly as early as the fall of 2018. Upon completion of this multi-year effort, Museum Director Jeffrey Andersen stated "the Florence Griswold Museum will provide a visitor experience that interweaves art, history, and landscape in ways rarely found in the museum world." The Museum is located at 96 Lyme Street, Old Lyme, CT. Visit [FlorenceGriswoldMuseum.org](http://FlorenceGriswoldMuseum.org) for more information.

- Kitchen & Bath Cabinetry
- Built-Ins
- Custom Furniture



**Always the Right Fit !**

Whether your project requires something unique and hand made in our own shop, or your budget requires quality semi-custom cabinetry designed for a custom look.

**860-528-2058**

851 Middlesex Turnpike, Old Saybrook, CT 06475

[mjmartinwoodworking.com](http://mjmartinwoodworking.com)

# AEGEAN TREASURES



*Eclectic women's boutique featuring Eileen Fisher, Tianello, Stehman pants, Arcopedico shoes and many more...*

**49 Main Street, Essex, CT 06426**  
**860.767.1688**

## COLDWELL BANKER RESIDENTIAL BROKERAGE

PROVEN results in  
EVERY market!



**Nancy Mesham**  
(860) 227-9071



**69 Quarry Dock, Niantic** **\$1,699,000**  
Spectacular waterfront Nantucket shingle with dock, and pool!



**65 Corsino, Old Lyme** **\$898,000**  
Make memories year round at the beach! Every amenity.



**8-1 Wolcott, Old Lyme** **\$649,900**  
Simply perfect. 4-5BR, 3FB, Majestic.



**14 Riverbend, Old Lyme** **\$599,000**  
Serene and private with stunning pool in Riverbend.



**9 Somerset Road, Old Lyme** **\$599,000**



**5 Swanswood, Old Lyme** **\$498,000**



**1 North Road, Point O' Woods** **\$419,000**

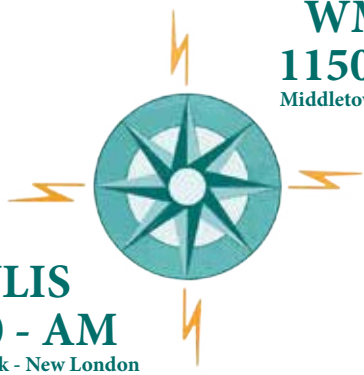


**32 Jericho, Old Lyme** **\$374,900**

Old Lyme Office | P.O. Box 509 | 86 Halls Road  
Old Lyme, CT 06371 | [ColdwellBankerHomes.com](http://ColdwellBankerHomes.com)







**WMRD**  
**1150 - AM**  
 Middletown - Hartford

**WLIS**  
**1420 - AM**  
 Old Saybrook - New London

**We are  
 The Best of the Valley & Shoreline!!**

*News, Weather, Sports, Traffic, Music, Talk  
 and Opinion, from around the Corner  
 and around the World!!*

**We've Got Personality!!!**

[www.wliswmrd.net](http://www.wliswmrd.net)

## Old Lyme Town Band



OLD LYME TOWN BAND IS SEEKING MUSICIANS FOR THE 2017 FALL CONCERT SEASON. The Old Lyme Town Band welcomes players of all ages, from talented middle-school aged to seniors. Membership is open to all interested wind, brass or percussion musicians.

### NO AUDITIONS

The Old Lyme Town Band's mission is to provide opportunities to enhance growth and life-long musical expression through challenging musical experiences for its members, camaraderie among musicians, and through concert performances aimed at entertaining a wide range of audiences supporting the history and heritage of the American Community Band.

Rehearsals are on Monday evenings at Christ the King Church in Old Lyme from 7 pm - 9 pm, starting September 18, 2017. Contact Brian Girasoli for more information or message us through Facebook.

President: Brian Girasoli,  
 Email: [gsoli76@gmail.com](mailto:gsoli76@gmail.com)  
 Phone: 860 608-2405  
 You can Find us on Facebook

# Short Term Stays Mean Peace of Mind



**For Assisted Living and Memory Care we can provide:**

- ◆ A safe environment and increased socialization opportunities for our resident guest.
- ◆ A trial visit to find if our community is the right fit for you.
- ◆ An opportunity for a caregiver to rest and recharge – perhaps even take a vacation!
- ◆ A supportive environment after a hospital or rehabilitation stay.
- ◆ Assisted living services customized to your needs.
- ◆ A place to call home – if just for a short time.



*~Retirement and Assisted Living~  
 ~Memory Care~*

**To learn more about The Saybrook at Haddam and our Short Term Stay program call (860) 345-3779.**



1556 Saybrook Road, Haddam, CT 06438 | [www.TheSaybrookAtHaddam.com](http://www.TheSaybrookAtHaddam.com)







# 2018

it's right around  
the corner!

## It's time to order your 2018 calendars

Our expert design and production team  
will do it all for you:

**Planning**  
**Layout & Design**  
**Printing**  
**Delivery**

**essex printing**

18 Industrial Park Road Centerbrook CT 06409, 860 767 9087 [www.essexprinting.com](http://www.essexprinting.com)

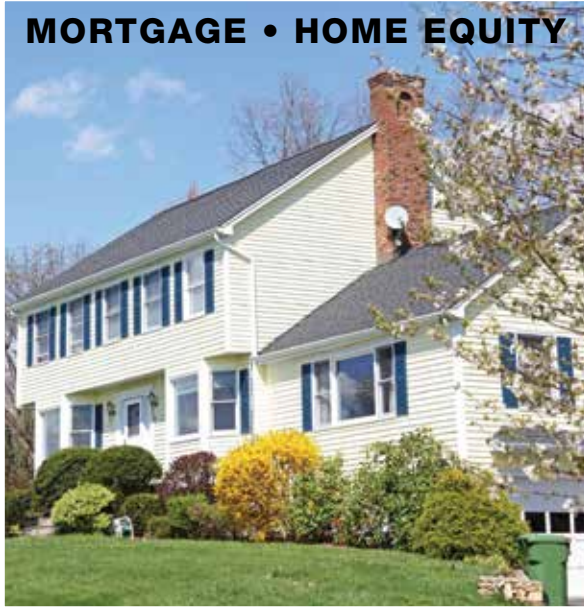


OLD LYME EVENTS  
Old Lyme Town Hall  
Lyme Street  
Old Lyme, CT 06371

PRSR STD  
U.S. Postage  
PAID  
Permit No. 155  
Deep River, CT

POSTAL CUSTOMER

**MORTGAGE • HOME EQUITY**



**BUSINESS • COMMERCIAL**



**Awesome Loan Rates**  
**essexsavings.com**



Essex, 35 Plains Road, 860-767-2573 • Essex, 9 Main Street, 860-767-8238 • Chester, 203 Middlesex Avenue, 860-526-0000  
Madison, 99 Durham Road, 203-318-8611 • Old Lyme, 101 Halls Road, 860-434-1646 • Old Saybrook, 155 Main Street, 860-388-3543

Toll-Free: 877-377-3922 • [www.essexsavings.com](http://www.essexsavings.com)

Member FDIC

 Equal Housing Lender